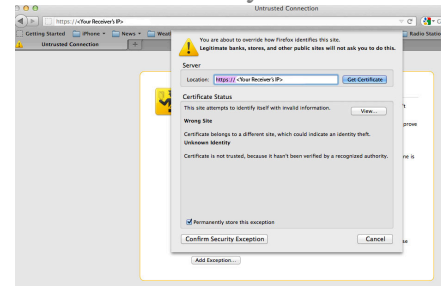




6. Click "Add Exception", then when you see the screen below, with the "Permanently Store



7. From now on you will be able to, transparently and without further warning prompts, access the receiver's IP address via https from the newly configured browser. You'll need to create additional security exceptions using steps 5 and 6 for each receiver that you wish to access via HTTPS.

Online URL: <https://kb.unavco.org/article/https-firefox-workaround-for-trimble-receivers-738.html>

with additional security warnings. Click the "I Understand the Risks" arrow shown below.

Exemption" box checked, click "Confirm Security Exemption".