

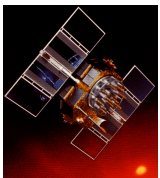
UNAVCO Resources: Data Processing Software

645 Beth Bartel March 5, 2010 [Processing Software](#) 2374

Data Processing Software

Several software packages to process precise GPS/GNSS data for research applications have been developed by different international research groups and commercial organizations. The availability of executable code, documentation, and user support varies with the individual development group. This page provides links to three of the major groups providing some level of support for the designated processing software packages and to the two commercial software packages available on loan through UNAVCO.

Academic Processing Software



[GAMIT/GLOBK](#)

Developed by MIT, Scripps Institution of Oceanography, and Harvard University with support from the National Science Foundation. May be obtained without written agreement or royalty fee by individuals, universities, and government agencies for any non-commercial purpose.



[Bernese](#)

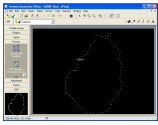
Developed primarily by the Astronomical Institute of the University of Berne. A licensing fee applies.



[GIPSY/OASIS II](#)

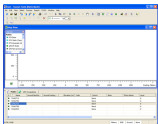
Developed by the NASA Jet Propulsion Laboratory (JPL). Licenses are freely available.

Commercial Processing Software



[Trimble Geomatics Office](#)

Trimble's commercial processing software. Ideal for fast-static and kinematic survey data.



[Topcon Tools](#)

Topcon's commercial processing software. Ideal for fast-static and kinematic survey data.

Online URL: <https://kb.unavco.org/article/unavco-resources-data-processing-software-645.html>