

Power - Wind Power Testing at UNAVCO through 2005, Phase 1

465 Beth Bartel March 27, 2010 [Power Test Reports](#), [Wind](#) 1795

Wind Power Testing at UNAVCO through 2005, Phase 1

The purpose of phase one of the wind generator testing is to become familiar with the general setup and power characteristics of the system. This includes tower construction, cabling, regulation and integration with a solar system. Though not a likely field system, this setup, located in a generally windy location south of Boulder, demonstrates constant and gusty wind conditions as well as stale weather conditions.



System: The Marshall Test site contains a power system which includes a battery bank, solar and wind charging systems. A permanent VSAT dish is located to test VSAT control boxes before they are sent out. Various receivers and radio modem systems are also tested at this location.



Panel: This is the power panel for the wind system. It contains a C40 Diversion Charge Controller (white w/ fins), 2 shunts (black, top) to measure current from generator and solar regulator, data logger (black box, middle), 50A breaker (grey, next to C40), stop switch, Freewave radio modem (grey, bottom) and diversion load (silver, attached to bottom of box).



Tower: The tower is 24 feet tall, guyed with 4 5/32 braided stainless cable. For this setup, the anchor points are 4 30" steel auger style ground anchors. Each guy wire is approximately 21' in length. The pole is constructed of two 10' sections coupled together and one 4' section clamped to the top, attached to the generator. Three 8 gauge wires run inside the tower to a junction box at the bottom, where there is a lightning arrester.

Other site photos:



Configuration:

This site serves as a test site for our power, GPS and communications equipment. The configuration during the test includes:

Load

- 2 GPS receivers: 1 Ashtech Micro-Z, 1 Ashtech Z12. Both shared 1 Ashtech choke ring antenna
- 2 Freewave radio modems transmitting at full power
- 1 Nanometrics VSAT system

Power Source:

- 4 55W solar panels
- 1 Southwest Wind Power Air Industrial Generator on 24' tower; 30" auger style ground anchors

Power Regulation:

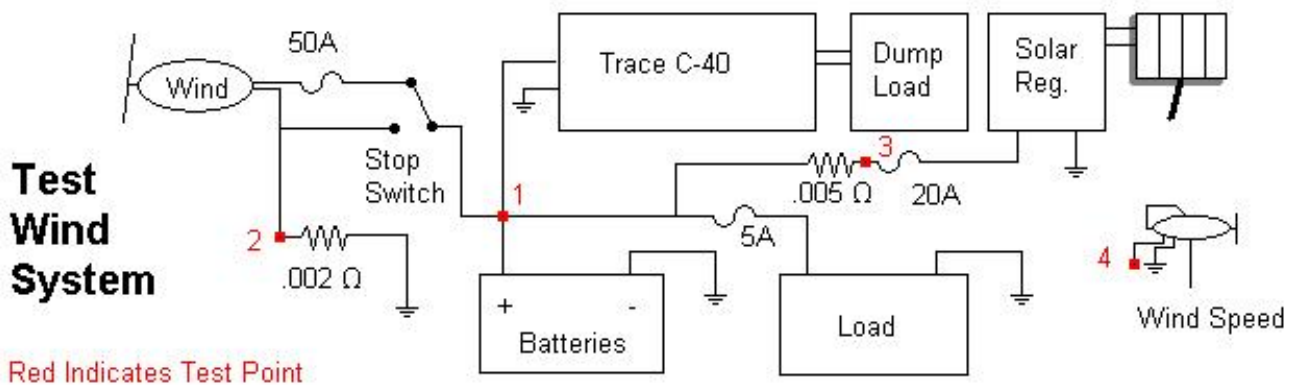
- 1 Trace C-40 diversion controller - hooked directly to battery bank
- 1 Flexcharge 30A Solar Regulator - hooked between solar panels and battery

Batteries:

- 8 Deep Cycle 90 amp hour batteries

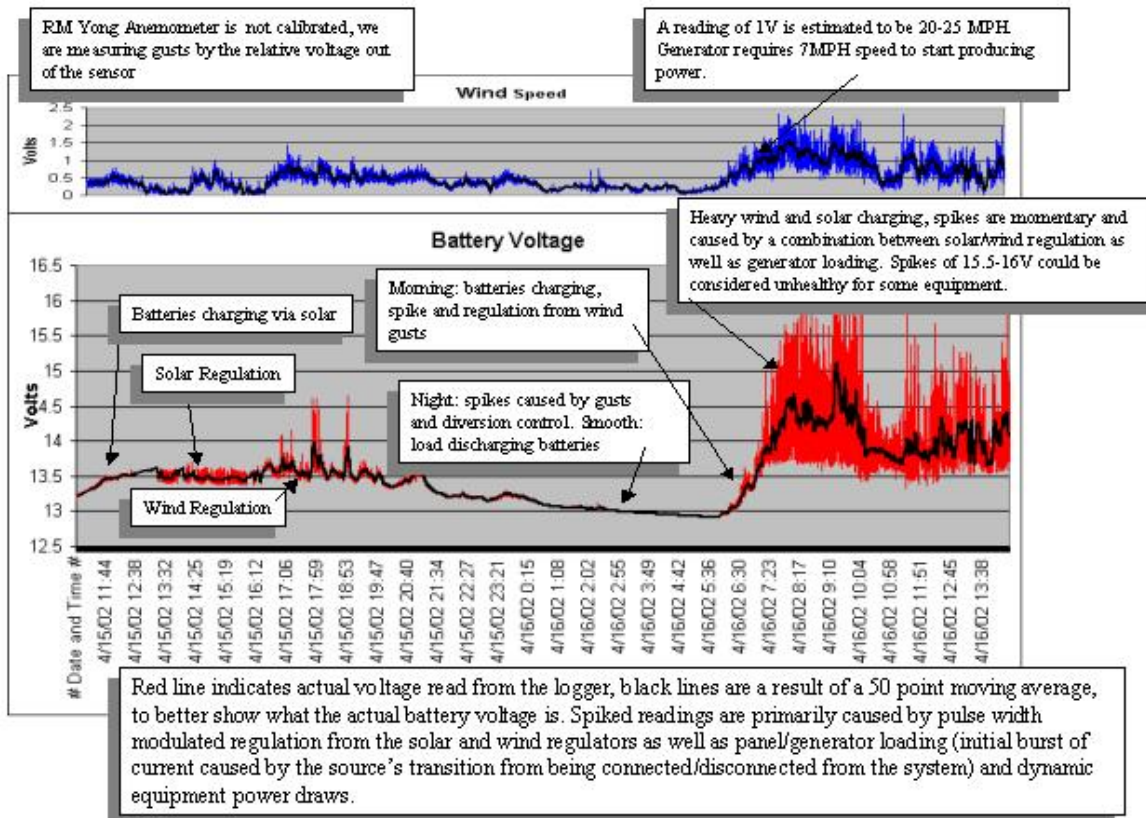
Data Logging:

- 1 MicroDaq 4-channel data logger - self powered, monitored battery voltage, wind speed and shunt voltages on the generator and the solar system (to measure current from those sources). Output is RS-232 via one of the freewave radios to UNAVCO facility.



Data and Graphs

Graph Key



April 14, 2002 - Duration: 1 day, 5 second intervals

May 6, 2002 - Duration: 14 days, 1 minute intervals

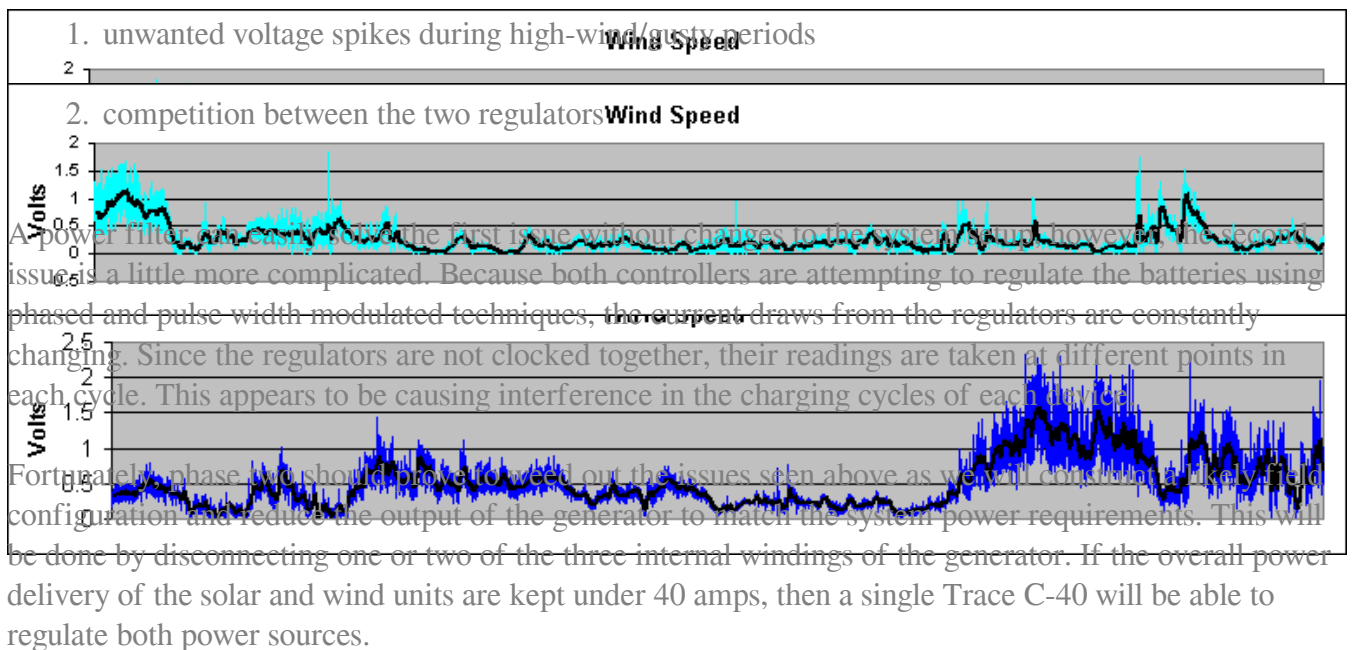
May 28, 2002 - Duration: 8 days, 30 second intervals

Results

Going into the test, it was known that the system load would not be enough to need the full capacity of the generator and solar panels combined. Because the site experiences non-windy periods, unhooking the solar system was not an option.

Throughout the test, the system appeared to perform reliably and consistently. The only problem we had appears to have been a defective circuit breaker. It was replaced with a higher rated, self resetting unit. Ice, extreme gusts and other weather appears to have not affected the unit. During this test, no lighting storms had occurred.

From the data obtained and seen in the graphs linked to above, it is seen that the system displayed two unwanted characteristics:



Online URL:

<https://kb.unavco.org/article/power-wind-power-testing-at-unavco-through-2005-phase-1-465.html>