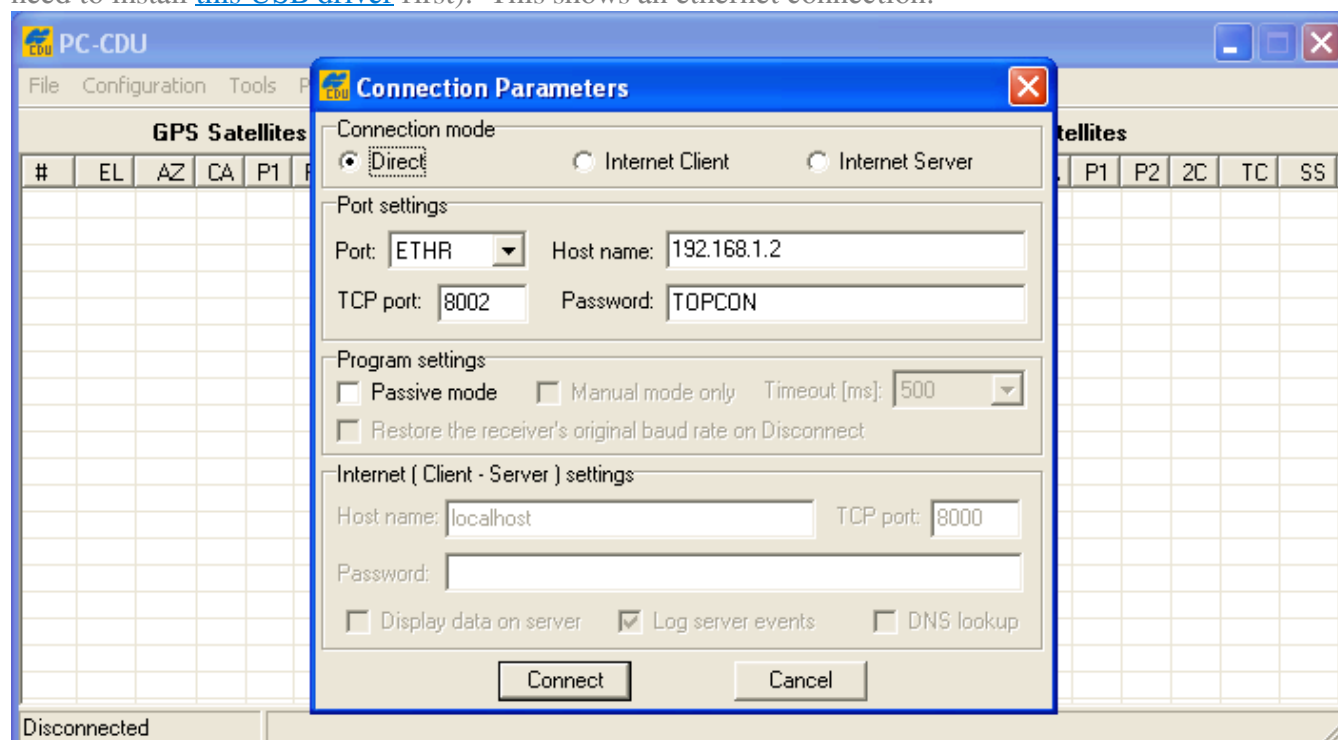


How to Update an Options Authorization File (OAF) on a Topcon Receiver (GB-1000, Net-G3A, etc.)

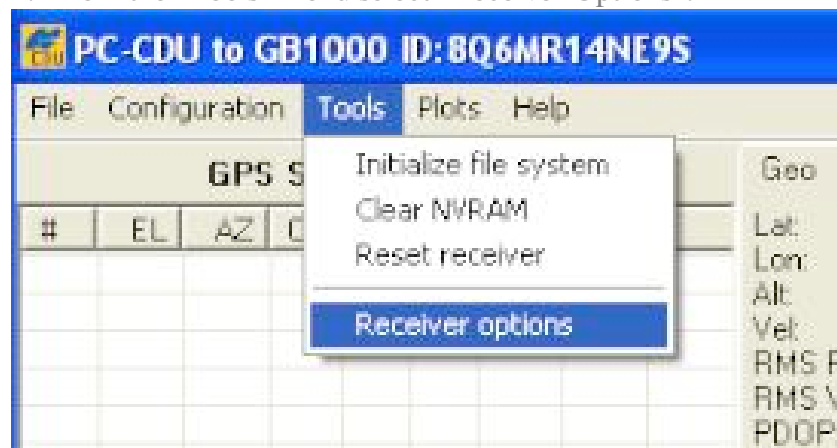
668 Freddy Blume November 23, 2015 [Topcon GB-1000](#), [Topcon NET-G3 and NET-G3A](#)
2580

Many features of Topcon GNSS receivers can only be enabled by applying an Options Authorization File (OAF) which is supplied by the manufacturer. Once you receive an OAF from Topcon, you must apply it to the receiver using the Windows utility [PC-CDU](#)

1. Launch PC-CDU and connect to your receiver, either using ethernet, serial port or USB (you may need to install [this USB driver](#) first). This shows an ethernet connection:

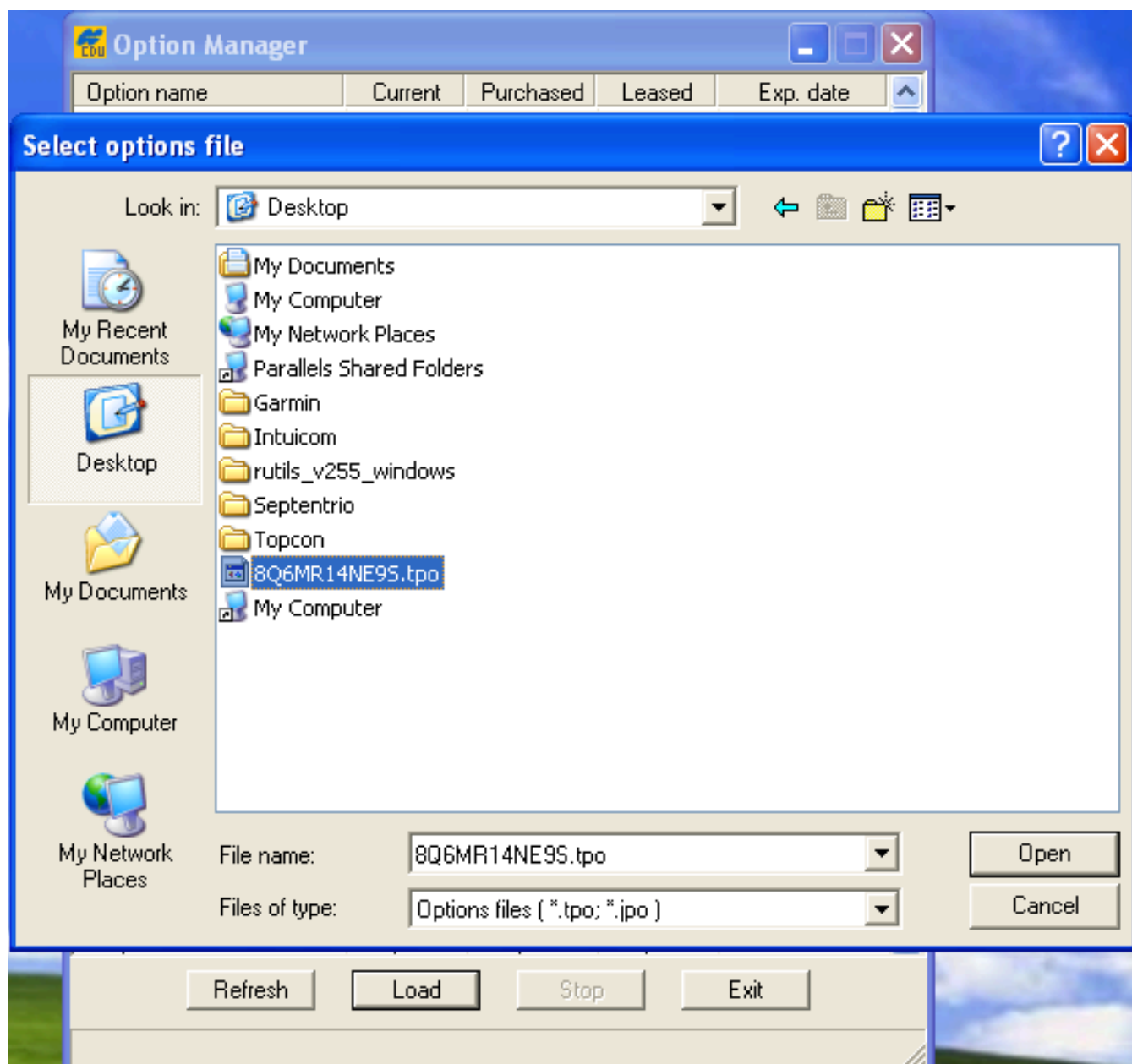


2. From the "Tools" menu select "Receiver Options":



Option name	Current	Purchased	Leased	Exp. date
GPS	yes	yes	yes	2/2/2008
GLONASS	yes	yes	yes	2/2/2008
L1	yes	yes	yes	2/2/2008
L2	yes	yes	yes	2/2/2008
Cinderella	yes	yes	yes	2/2/2008
Position update rate (Hz)	20	20	20	2/2/2008
Raw data update rate (Hz)	20	20	20	2/2/2008
Code differential Base	yes	yes	yes	2/2/2008
Code differential Rover	yes	yes	yes	2/2/2008
RTK Base	yes	yes	yes	2/2/2008
RTK Rover (Hz)	20	20	20	2/2/2008
Memory (Mb)	1024	1024	1024	2/2/2008
Co-Op Tracking	yes	yes	yes	2/2/2008
1-PPS Timing Signal	2	2	2	2/2/2008
Event Markers	2	0	2	2/2/2008
In-Band Int. Rejection	1	0	1	2/2/2008
Multipath Reduction	yes	yes	yes	2/2/2008
Frequency Input	yes	yes	yes	2/2/2008
Freq. Lock and Output	yes	yes	yes	2/2/2008
Serial Port A (Kbps)	460	460	460	2/2/2008
Serial Port B (Kbps)	460	460	460	2/2/2008
Serial Port C (Kbps)	460	460	460	2/2/2008
Serial Port D (Kbps)	460	460	460	2/2/2008
Infrared Port	-----	yes	yes	2/2/2008
Parallel Port	-----	no	yes	2/2/2008
Sp.Sp. Freq. Hop.	-----	no	yes	2/2/2008
Sp.Sp. Direct	-----	no	yes	2/2/2008
RAIM	yes	yes	yes	2/2/2008
Datums support	yes	yes	yes	2/2/2008

Refresh Load Stop Exit



5. Click "Open" after selecting the proper file. If the load is successful you will quickly see the following screen, followed by a receiver reset and disconnection:

Option name	Current	Purchased	Leased	Exp. date
GPS		success	absent	
GLONASS		success	absent	
L1		success	absent	
L2		success	absent	
Cinderella		success	absent	
Position update rate (Hz)		success	absent	
Raw data update rate (Hz)		success	absent	
Code differential Base		success	absent	
Code differential Rover		success	absent	
RTK Base		success	absent	
RTK Rover (Hz)		success	absent	
Memory (Mb)		success	absent	
Co-Op Tracking		success	absent	
1-PPS Timing Signal		success	absent	
Event Markers		success	absent	
In-Band Int. Rejection		success	absent	
Multipath Reduction		success	absent	
Frequency Input		success	absent	
Freq. Lock and Output		success	absent	
Serial Port A (Kbps)		success	absent	
Serial Port B (Kbps)		success	absent	
Serial Port C (Kbps)		success	absent	
Serial Port D (Kbps)		success	absent	
Infrared Port		success	absent	
Parallel Port		success	absent	
Sp.Sp. Freq. Hop.		success	absent	
Sp.Sp. Direct		success	absent	
RAIM		success	absent	
Datums support		success	absent	
Magnetic azimuth		success	absent	

Refresh Load Stop Exit

If this does NOT happen, then the OAF you have selected is not compatible with this receiver. Select a different file or contact Topcon for assistance with a new file. You should include your receiver ID number (which can be copied when selecting "About" from the "Help" menu on the main PC-CDU screen).

6. You will be presented with the same connection screen as in step (1) above. When you reconnect the newly loaded options will be displayed as in step 3. Check to make sure that the new settings you have requested from Topcon have been enabled. Then click "Exit" and resume receiver operations.

Online URL:

<https://kb.unavco.org/article/how-to-update-an-options-authorization-file-oaf-on-a-topcon-receiver-gb-1000-net-g3a-etc-668.html>