

Trimble R7/5700 - How to verify receiver tracking using Trimble GPS Configurator software

Article Number: 612 | Rating: 5/5 from 1 votes | Last Updated: Tue, Jan 26, 2010 at 9:37 PM

Trimble 5700/R7 - How to verify receiver tracking using Trimble GPS Configurator software

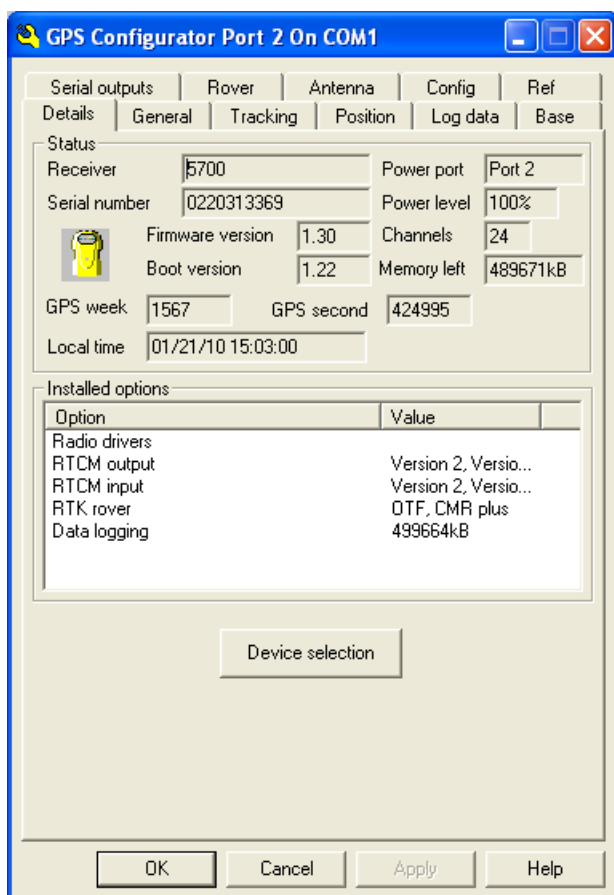
Trimble GPS Configurator software can be used to check the status of a receiver. We do not recommend it for configuring the receiver; to configure a 5700 or R7 receiver, see [How to configure the receiver using Trimble Configuration Toolbox software](#).

To proceed with GPS Configurator, download the freely available Trimble GPS Configurator software, which runs only on a Windows platform:

- [Trimble GPS Configurator](#)

View receiver, tracking, and survey characteristics

1. Power the receiver if it's not already running.
2. Connect receiver port 2 to your computer's serial port using a lemo/db9 programming cable. If your computer does not have a serial port, use a USB-serial adapter.
3. Open Trimble GPS Configurator. Select the type of device you are connecting to and the port you are using on your computer. Click Connect.
4. Use the tabs along the top to view different receiver, tracking, and configuration characteristics.



bab2010

Posted by: [Beth Bartel](#) - Tue, Jan 26, 2010 at 9:37 PM. This article has been viewed 8549 times.

Online URL: <https://kb.unavco.org/kb/article/trimble-r7-5700-how-to-verify-receiver-tracking-using-trimble-gps-configurator-software-612.html>