

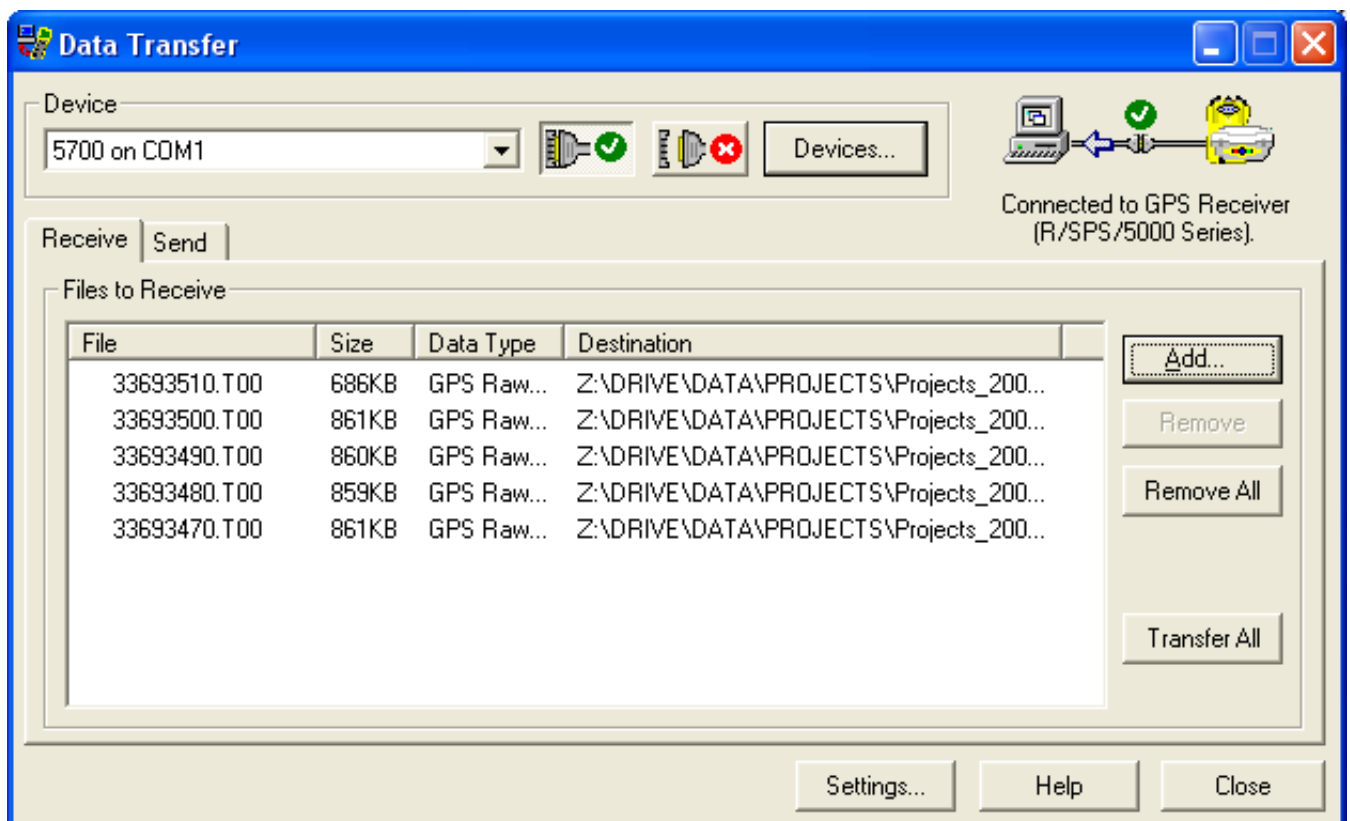
# Trimble Data Transfer Utility v1.52 (Feb 9, 2011)

603 Freddy Blume February 9, 2011 [Trimble Software](#), [Trimble Utilities](#) 2639

The Trimble Data Transfer software transfers data from a range of Trimble devices to your PC.

Devices that you can download data from include:

- Trimble Survey Controller
- Trimble Series 4000 and R/5000 receivers
- Trimble 3300
- Trimble 3600 (Elta, Geodimeter, TDS)
- Trimble 5600 (Elta, Geodimeter, TDS)
- Trimble Digital Fieldbook
- DiNi Digital Level
- Trimble Survey Pro
- All Mapping and GIS data collectors
- Nikon total stations (serial connections)
- Trimble Business Center



The Trimble Data Transfer software is freely available and runs only on a Windows platform. Check the [Trimble Data Transfer Utility page](#) for the most recent version.

- Trimble Data Transfer Utility v1.52 (February 9, 2011)
  - Microsoft Windows NT/2000/XP/VISTA/Windows7 Users:  
[Trimble Data Transfer Utility website](#) for the Trimble Data Transfer V1.52 One-Click Install, or use the VISTA install (below)
  - Microsoft Windows VISTA:  
[DataTransfer152.exe \(55 MB\)](#)

Online URL: <https://kb.unavco.org/article/trimble-data-transfer-utility-v1-52-feb-9-2011-603.html>