

Vaisala - How to integrate the Vaisala WXT520 with the Ashtech MicroZ

528 Beth Bartel January 26, 2010 [Vaisala](#) 1983

Integrating the Vaisala WXT520 with the Ashtech MicroZ



Equipment needed

- Vaisala WXT520 Met-Pack
- Vaisala WXT520 cable with DB9 serial connector
- 9V battery
- Ashtech MicroZ
- Ashtech MicroZ Y cable

Software Needed

- Hyperterminal (Private Edition, Ver. 6.3 by Hilgraeve Monroe, Michigan USA was used for this test)
- Vaisala Configuration Tool Version 2.01 r. 9 (see link below)

Configuring the Vaisala WXT520

We first describe how to configure the WXT520 to output a single XDR NMEA v3.0 0183 message containing the following values: Pressure, Temperature, Humidity, Wind Speed, Wind Direction, Rain Accumulation & Hail Accumulation. The reason we choose an XDR NMEA v3.0 0183 message is because this is the only type of met message the Ashtech MircoZ can receive.

One way to configure the WXT520 is using the Vaisala Configuration Tool. The latest version at the time of writing this is Ver. 2.01 r.9; it can be downloaded at <http://www.vaisala.com/services/software.html>.

Connect the WXT520 to a Windows computer and start up the Configuration Tool. If you don't see any readings coming in, you will have to go into Configuration Setup via File → Configuration Setup. The following window will appear:

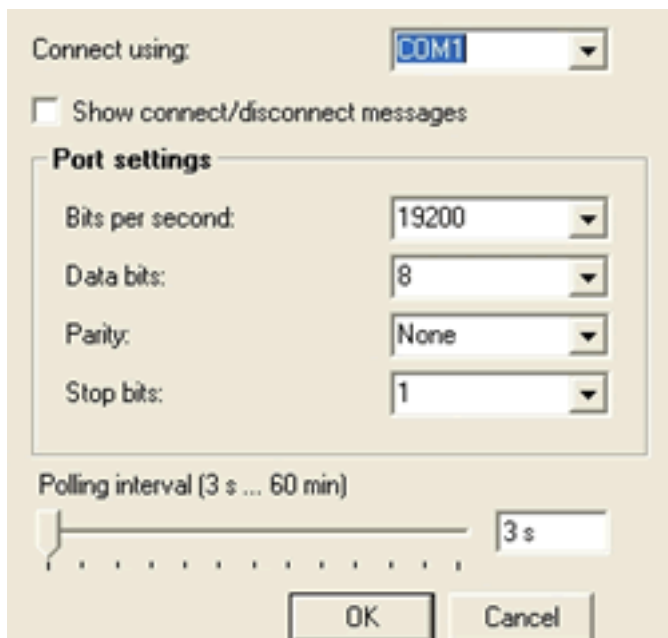


Figure 1: COM port settings for communicating with a WXT520 using the Vaisala Configuration Tool.

Confirm the settings above and click OK. In the main window you should now see some values being read by the Configuration Tool from WXT520.

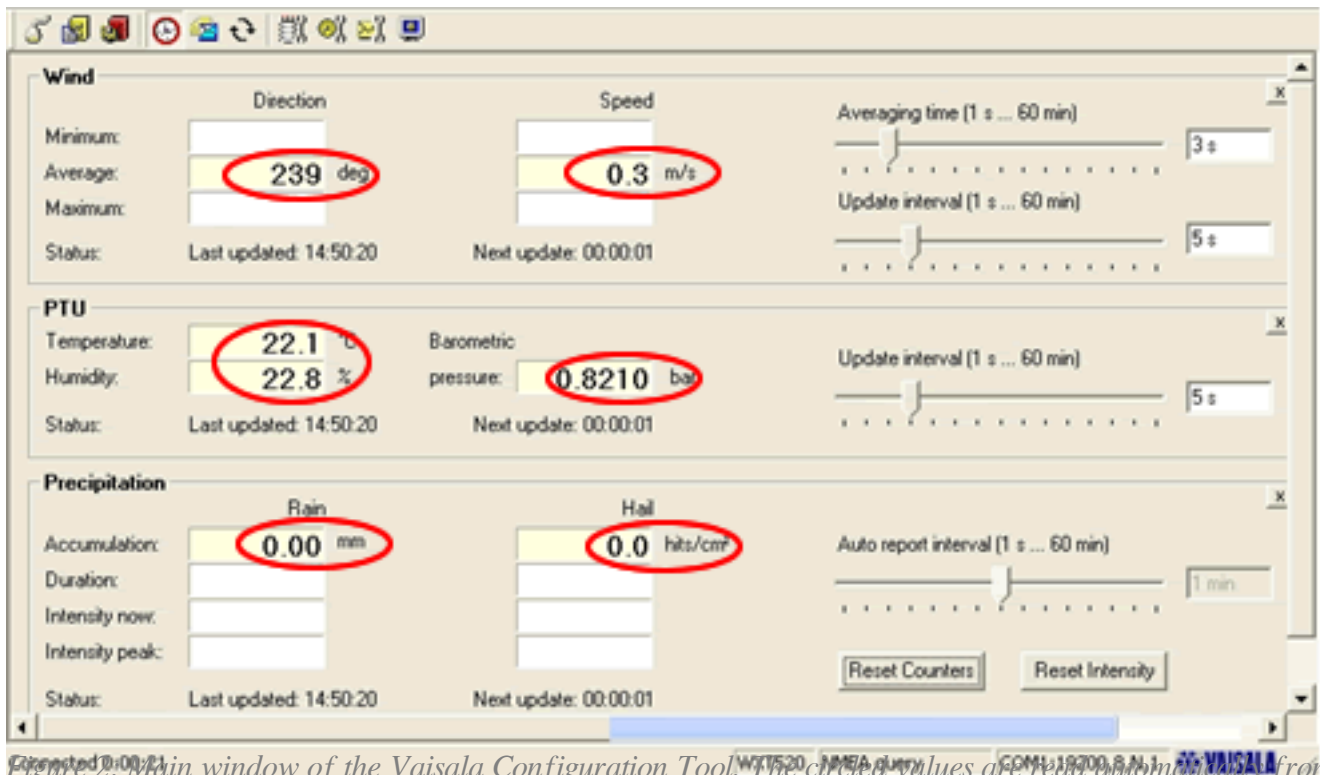


Figure 2: Main window of the Vaisala Configuration Tool. The circled values are read automatically from the WXT520 if it is set up to output Wind, PTU and Precipitation.

Now that the Vaisala Configuration Tool is communicating with the WXT520 we can start setting it up to output the XDR NMEA v3.0 0189 message.

From the Settings drop-down menu select “Device...” The following window will appear; check that the settings are as they are shown here:

Device			
Model:	WXT520	Serial number:	E3240001
Version:	2.14	PTU sn:	E3120014
Calibration date:	6.8.2009	Order code:	AAB0BA10B
Info:	<input type="text" value="N"/>	Address:	<input type="text" value="0"/>

Enhancements	
<input type="checkbox"/> Enable heating	Supervision interval (1 s ... 60 min) <input type="range" value="60 min"/>
<input type="checkbox"/> Error messaging	
<input checked="" type="checkbox"/> Composite message auto transmission	Auto composite interval (1 s ... 60 min) <input type="range" value="5"/>

Communication protocol	User port settings
<input type="radio"/> SDI-12 v1.3 <input type="checkbox"/> Continuous measurements	Port type: <input type="text" value="RS-232"/>
<input checked="" type="radio"/> NMEA v3.0 <input checked="" type="checkbox"/> Query only <input checked="" type="checkbox"/> Use XDR for wind message	Bits per second: <input type="text" value="19200"/>
<input type="radio"/> ASCII auto <input type="checkbox"/> Polling only <input type="checkbox"/> Response with CRC	Data bits: <input type="text" value="8"/>
	Parity: <input type="text" value="None"/>
	Stop bits: <input type="text" value="1"/>
	RS-485 line delay (ms): <input type="text" value="25"/>

Figure 3: The Device Configuration window for the WXT520. The key settings in this window are the “Composite Message auto transmission” checkbox and the “Auto Composite interval”. Set the interval to what you need it to be. The next key setting in this window is the “Communication protocol”. Be sure to select “NMEA v3.0” and check the “Query Only” and the “Use XDR for wind message”.

Note that we have checked the “Query Only” box in the Communication Protocol section. This is so that Wind, PTU and Precipitation data don’t come through unless the WXT520 is queried for them. Also note that we check “Composite message auto transmission” so the composite message will automatically be output but the individual Wind, PTU and Precipitation will not. This is crucial. After you are done click

OK.

We now configure the Wind, PTU and Precipitation sensors within the WXT520. From the Settings drop-down menu select “Sensors...” You will get the following window. Check that the settings are as they are shown here:

Wind

Gust averaging:

Speed unit:

Sampling frequency:

Direction correction (°):

Averaging time (1 s ... 60 min):

Update interval (1 s ... 60 min):

PTU

Temperature unit:

Barometric pressure unit:

Update interval (1 s ... 60 min):

Precipitation

Counter reset:

Rain unit:

Hail unit:

Rain overflow reset (1.00 ... 655.35 mm):

Hail overflow reset (10.0 ... 6553.5 hits/mm²):

Auto report interval (1 s ... 60 min):

Auto report based on:

OK Cancel Defaults

Figure 4: WXT520 sensor settings. The main things to change here are the PTU “Temperature Unit” and the “Barometric pressure unit”.

Now we move on to the final step in configuring this WXT520, the Message Settings. From the Settings drop-down menu select “Messages...” The following window will appear. Check that the settings are as they are shown here:

Wind message <input type="checkbox"/> Direction minimum <input type="checkbox"/> Speed minimum <input checked="" type="checkbox"/> Direction average <input checked="" type="checkbox"/> Speed average <input type="checkbox"/> Direction maximum <input type="checkbox"/> Speed maximum	Composite message <input type="checkbox"/> Direction minimum <input type="checkbox"/> Speed minimum <input checked="" type="checkbox"/> Direction average <input checked="" type="checkbox"/> Speed average <input type="checkbox"/> Direction maximum <input type="checkbox"/> Speed maximum <input checked="" type="checkbox"/> Barometric pressure <input type="checkbox"/> Pressure ref. temp <input checked="" type="checkbox"/> Air temperature <input checked="" type="checkbox"/> Relative humidity <input checked="" type="checkbox"/> Rain accumulation <input checked="" type="checkbox"/> Hail accumulation <input type="checkbox"/> Rain duration <input type="checkbox"/> Hail duration <input type="checkbox"/> Rain intensity <input type="checkbox"/> Hail intensity <input type="checkbox"/> Rain peak <input type="checkbox"/> Hail peak <input type="checkbox"/> Heating temp. <input type="checkbox"/> 3.5 V reference <input type="checkbox"/> Heating voltage <input type="checkbox"/> Info <input type="checkbox"/> Supply voltage
PTU message <input checked="" type="checkbox"/> Barometric pressure <input type="checkbox"/> Pressure ref. temp <input checked="" type="checkbox"/> Air temperature <input checked="" type="checkbox"/> Relative humidity	
Precipitation message <input checked="" type="checkbox"/> Rain accumulation <input checked="" type="checkbox"/> Hail accumulation <input type="checkbox"/> Rain duration <input type="checkbox"/> Hail duration <input type="checkbox"/> Rain intensity <input type="checkbox"/> Hail intensity <input type="checkbox"/> Rain peak <input type="checkbox"/> Hail peak	
Self diagnostic <input type="checkbox"/> Heating temp. <input type="checkbox"/> 3.5 V reference <input type="checkbox"/> Heating voltage <input type="checkbox"/> Info <input type="checkbox"/> Supply voltage	

Figure 5: The Wind, PTU and Precipitation message boxes are the values that are queried by the Vaisala Configuration Tool as in Figure 2. The values under the Composite Message Section are the values that will be output to and combined with the GPS U files being recorded on the Ashtech MicroZ.

The WXT520 met-pack is now configured to output messages that look like:

```
$WIXDR,A,282,D,1,S,0.1,M,1,C,22.0,C,0,H,23.0,P,0,P,0.8211,B,0,V,0.00,M,0,V,0.0,M,1*42
```

This message will be read by the Ashtech MicroZ and injected into U files being recorded on the GPS receiver.

In order to check that these messages are being output at the specified rate, connect to the WXT520 via Hyperterminal. Below are the settings you need to set in the Hyperterminal. From within Hyperterminal,

click the drop-down menu File and select “Properties”.

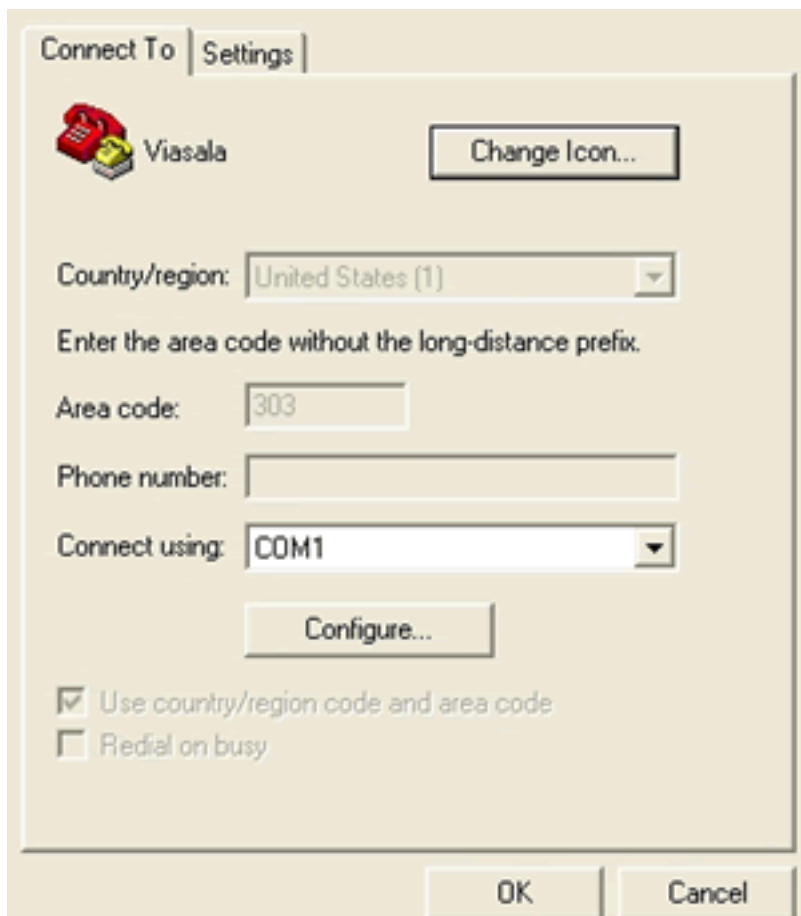


Figure 6: Beginning menu to configure Hyperterminal to communicate with the WXT520.

From here click on the “Settings” tab at the top. The following window will appear. Check that the settings are as they are shown here:

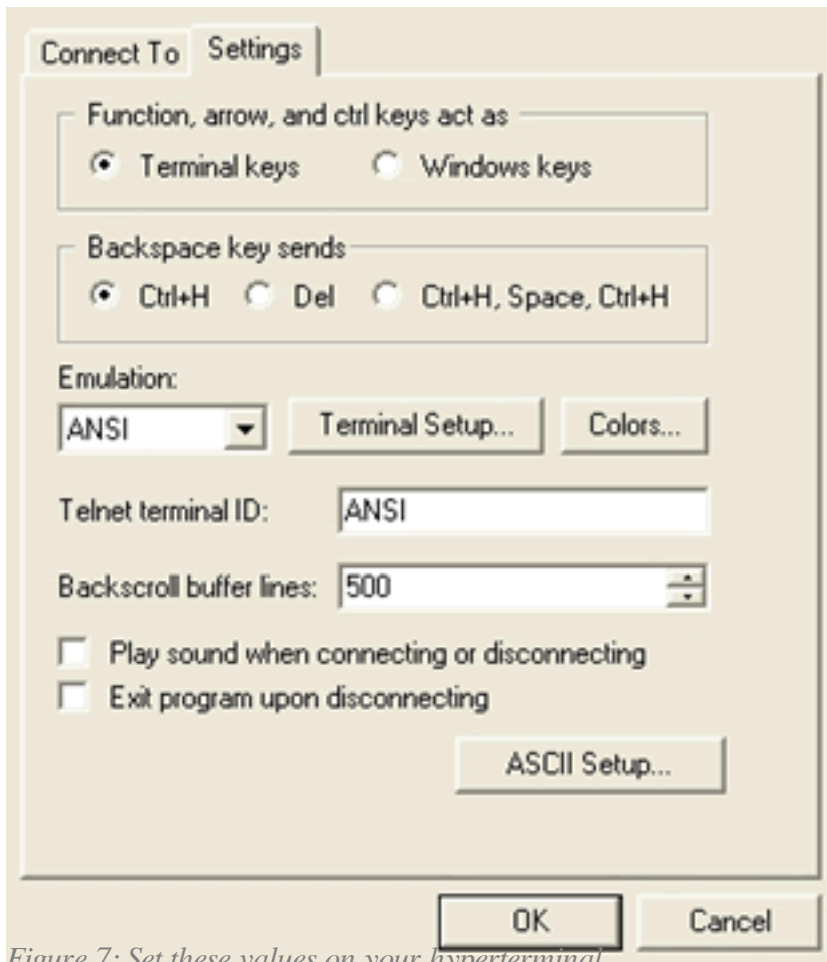


Figure 7: Set these values on your hyperterminal.

From this window click on “ASCII Setup...” to get the following menu. Check that the settings are as they are shown here:

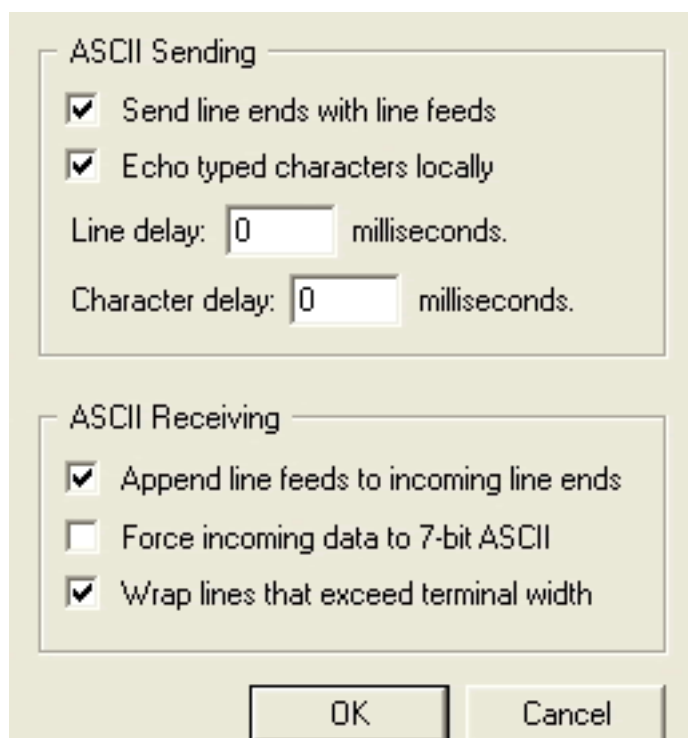


Figure 8: These settings will allow you to send commands to the WXT520 via hyperterminal.

Now that all of this is set, click OK until you get back to the main Hyperterminal menu. You are now ready to connect to the WXT520. Once you connect you will start seeing the Composite Message come through to the terminal.

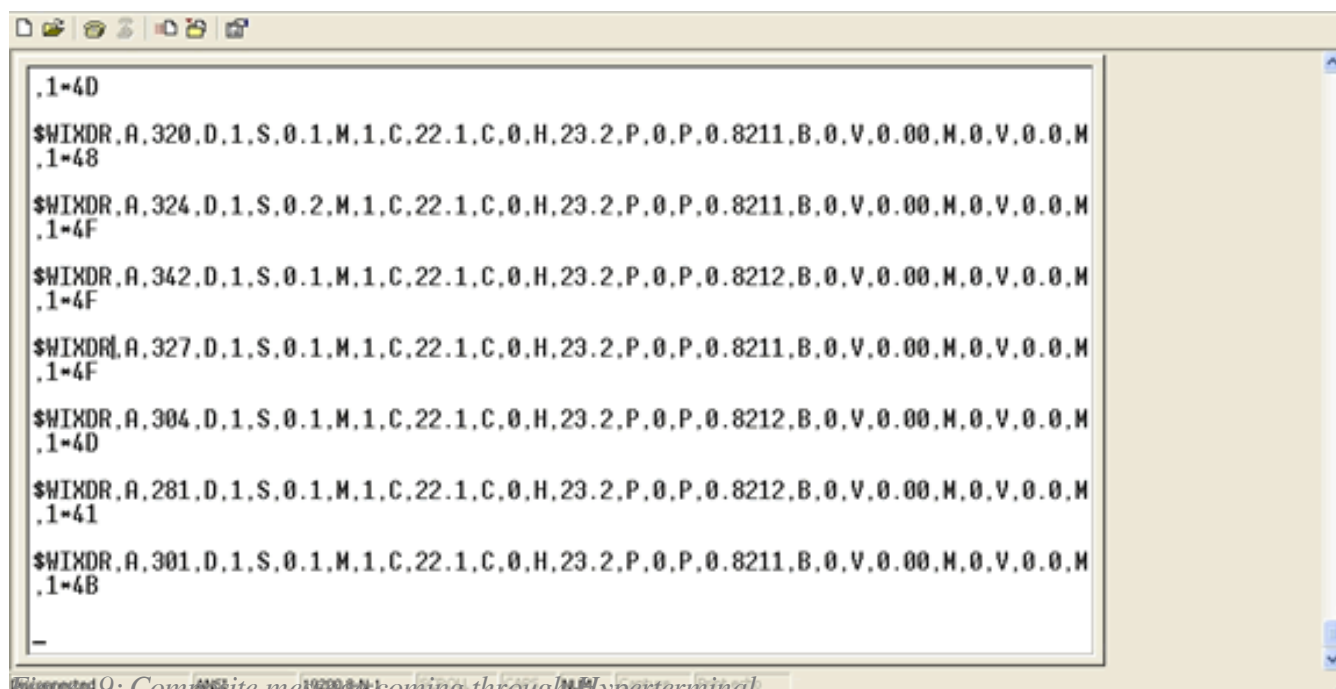


Figure 9: Composite message coming through Hyperterminal.

Configuring the Ashtech MicroZ

Now we set up the Ashtech MicroZ GPS receiver to collect met-pack data from the WXT520. Connect

to the Ashtech MicroZ using sharc in terminal mode. From the command line issue the following command:

```
> sharc --port /dev/ttyS0 --baud 19200 --terminal
```

Creation Time: Tue Oct 27 21:48:09 2009

Sharc version 1.00b3

Planned Operations

Communications: Direct Connect

Port: /dev/ttyS0

Baud: 19200

Parity: N

Data Bits: 8

Stop Bits: 1

Actual Operations

Communications: OK

OpenConnection:Direct connection achieved...

Querying Receiver ID (attempt 0):

Receiver ID: \$PASHR,RID,UZ,30,CQ00,---XM--3-----C,1A01*20

Found: UZ,30,CQ00,---XM--3-----C,1A01*20

Terminal->

At this point issue the commands:

Terminal-> \$pashs,out,c,met,on

Terminal-> \$pashs,met,cmd,c,*

Terminal-> \$pashs,met,init,c,no

Terminal-> \$pashs,met,intvl,c,[interval you want]

Now you check that the receiver is ready to start receiving met-data from the WXT520 by issuing the following command:

Terminal-> \$pashq,met
Input = \$PASHQ,MET

Now connect the serial cable of the WXT520 to the Y cable of the Ashtech MicroZ and you should start seeing the input single slight turn green at the interval you specified the composite message should be output by the WXT520.

In order to double check that data is being injected into the U files being recorded set the receiver to log some data and then download the U file and run teqc on it as follows:

```
teqc +ash u +met $Ufile.met $Ufile.doy > $Ufile.09o
```

This command will produce a file with extension “met” where the met data is contained. Here is a sample of what the met data file should look like:

nf2009

Online URL:

<https://kb.unavco.org/article/vaisala-how-to-integrate-the-vaisala-wxt520-with-the-ashtech-microz-528.html>