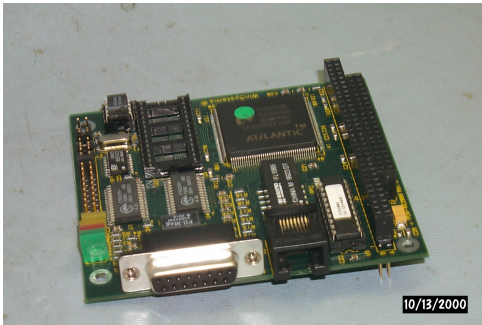


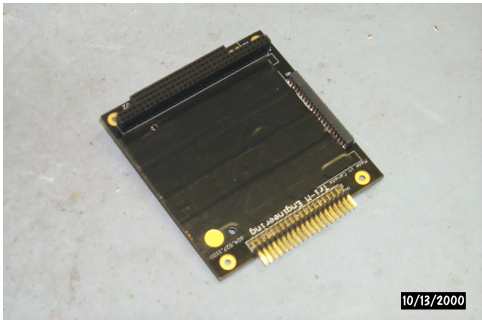
PC/104 - Pictures B

448 Beth Bartel July 7, 2009 [PC/104](#) 592

PC/104 Pictures B



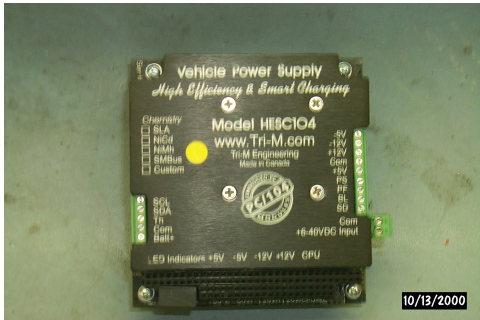
The 10 base T ethernet card with AUI.



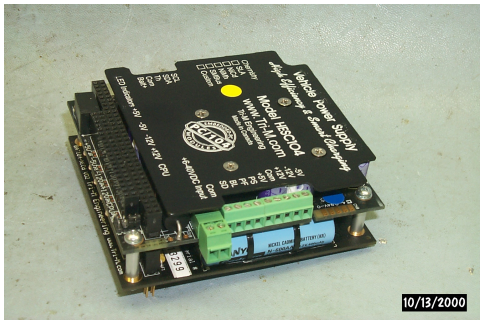
Hard drive adapter board.



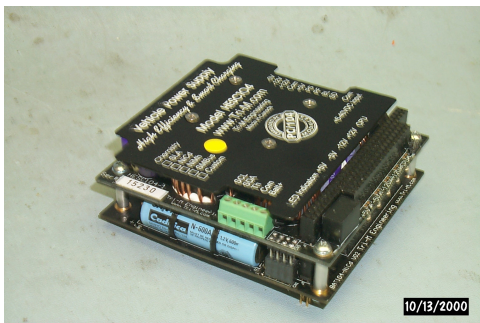
Hard drive fixed onto the hard drive adapter board. Hard drive adapter board provides power to the drive through the PC/104 plug. This adapter board also provides a standard IDE connector.



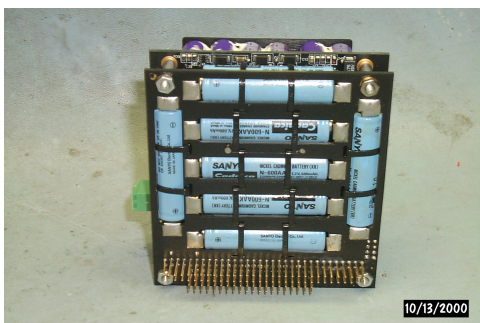
Top view of the UPS power supply controller, already bolted onto the battery bank board.



Side view of power supply controller and battery bank.



Side view of power supply controller and battery bank.



Battery bank.

Online URL: <https://kb.unavco.org/article/pc-104-pictures-b-448.html>