

Instructions for upgrading Firmware on a Trimble 5700 or R7

1. Connect the Trimble power / comm cable to the receiver. Connect a serial cable from the Trimble cable to your computer (Figure 1).



Figure 1

2. Install and open the WinFlash application WFC-Net_Rx_5x-v325v231v230.exe.
 - a. The link to the upgrade software is:
 - [Trimble R8, R7, 5800, 5700 v2.30, v2.31 & v3.24 Firmware](#)
 - http://trl.trimble.com/dscgi/ds.py/Get/File-331372/WFC-Net_Rx_5x-v324v320v231v230.exe
3. Once the WinFlash software is loaded, select and run.
 - a. Select the receiver model that needs the Firmware upgraded (Figure 2).

WinFlash v1.217 - Device Configuration

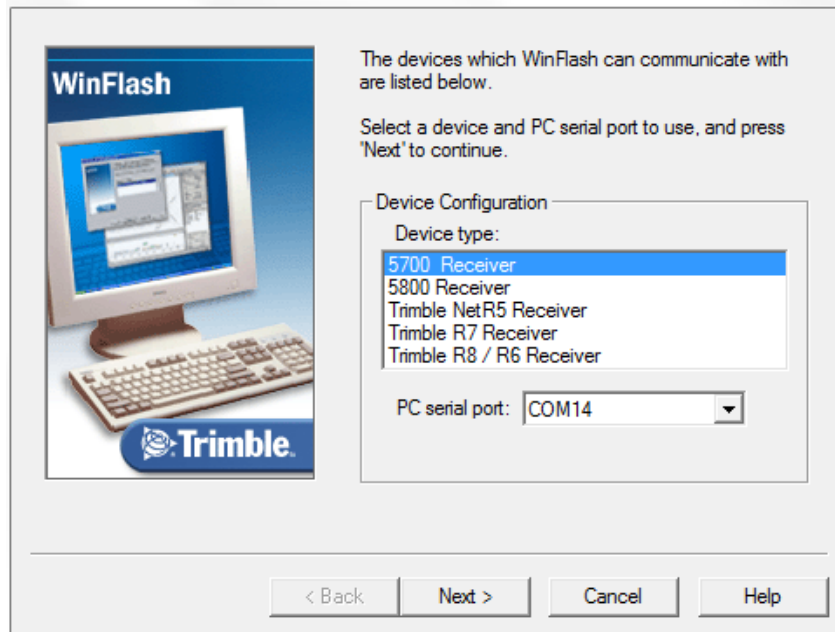


Figure 2

4. Select "Update receiver options" (Figure 3).

5700 v4.40b3 - Operation Selection

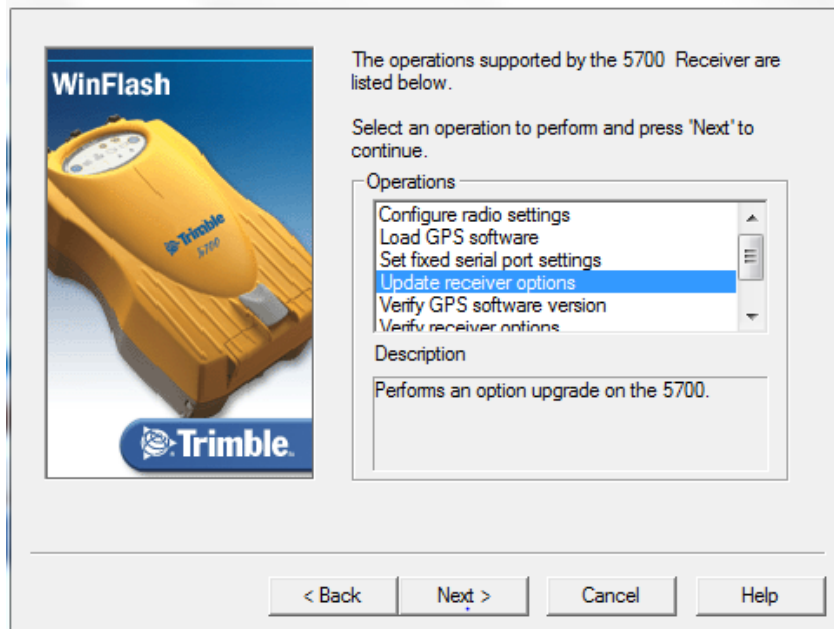


Figure 3

5. Select "Legacy password" and enter the Option Password (Figure 4).

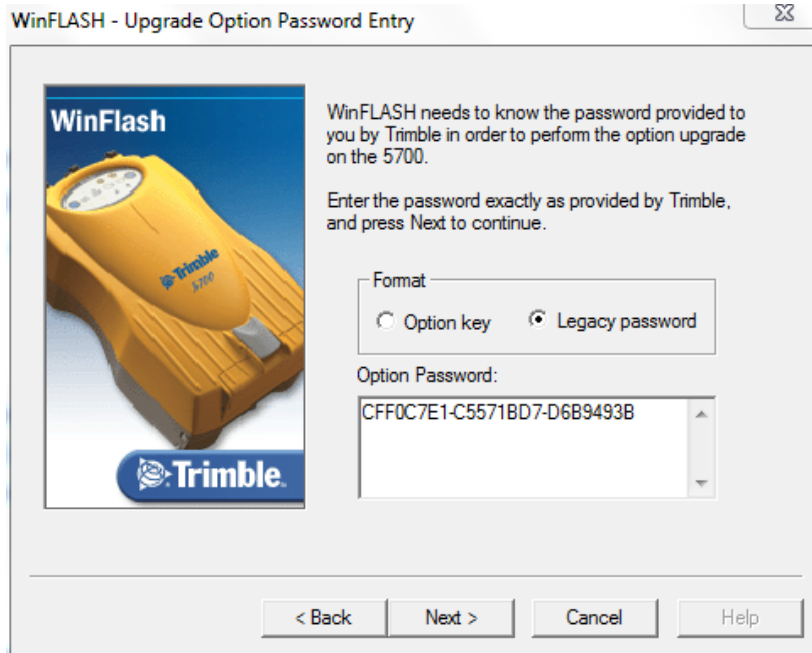


Figure 4

NOTE: IF you need a password code to update your firmware contact:
Sales_TrimbleProtected@Trimble.com

6. Review the settings and click "Finish" (Figure 5).

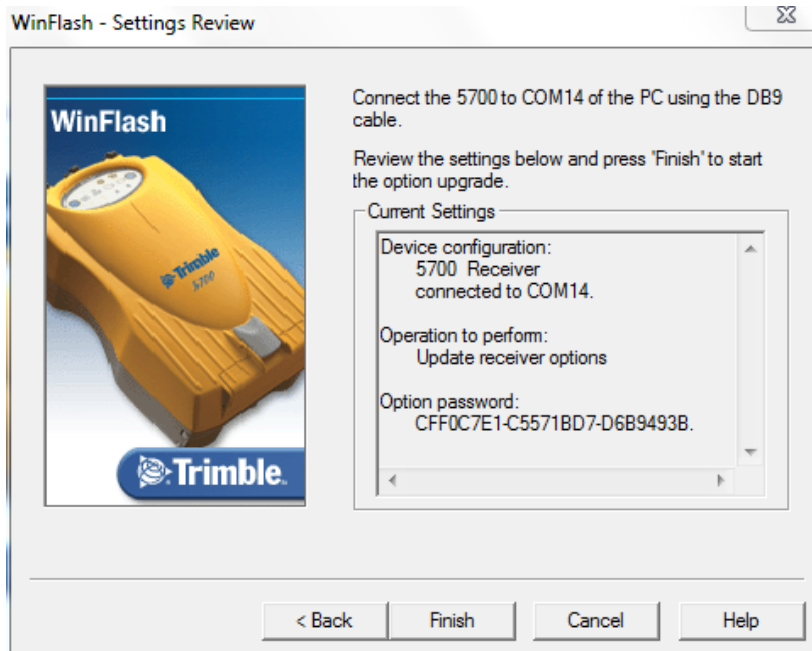


Figure 5

7. The following windows (Figures 6 & 7) will appear. Click “Menu” once the upgrade option is completed.

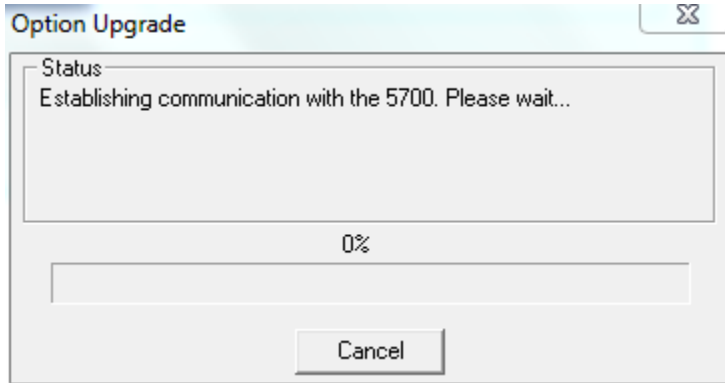


Figure 6

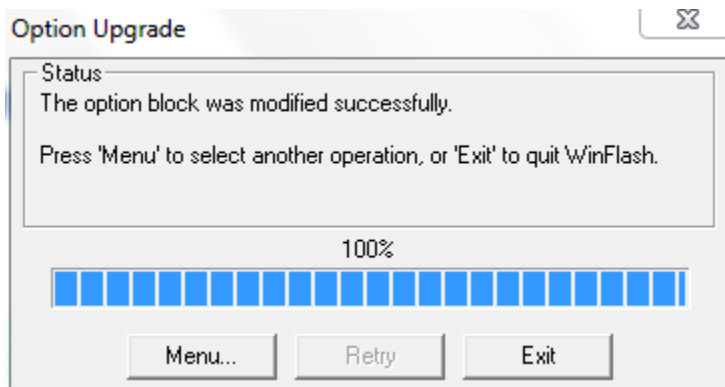


Figure 7

8. Select “Load GPS software” (Figure 8).

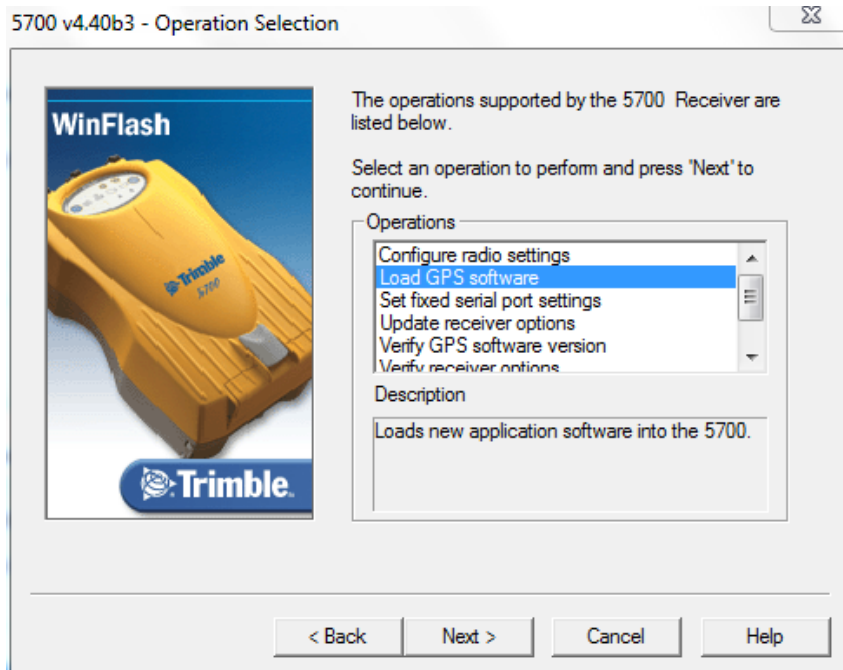


Figure 8

9. Select the Firmware version to be loaded onto the receiver (Figure 9).



Figure 9

10. Click “Finish” to continue and start the firmware upgrade (Figure 10).



Figure 10

You will see the following windows (Figures 11-14) that complete the firmware upgrade process

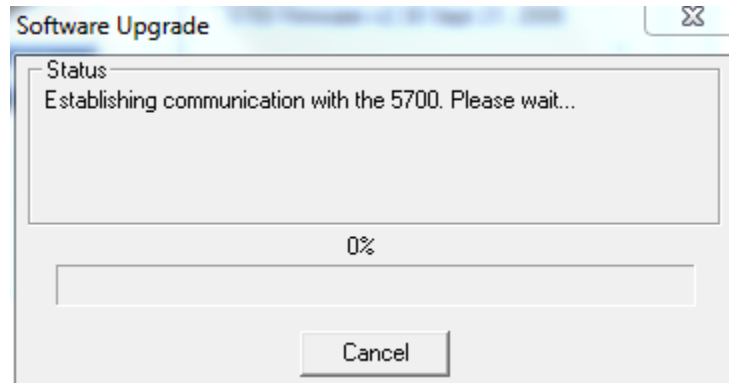


Figure 11

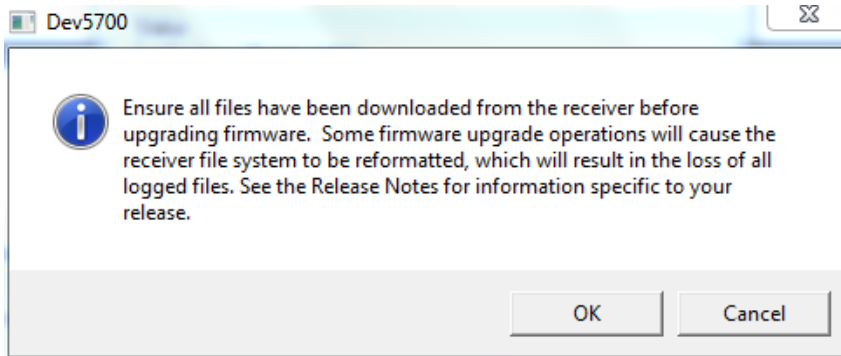


Figure 12

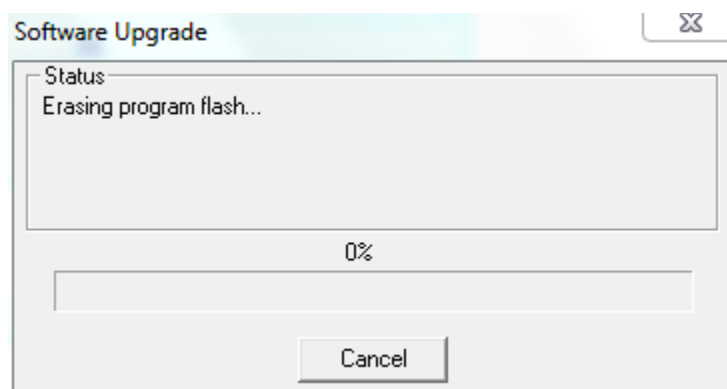


Figure 13

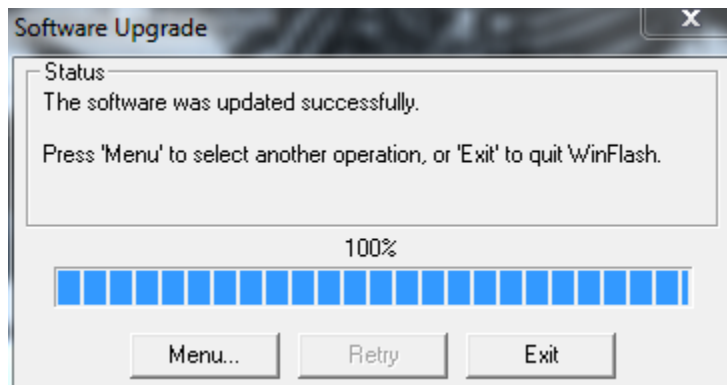


Figure 14