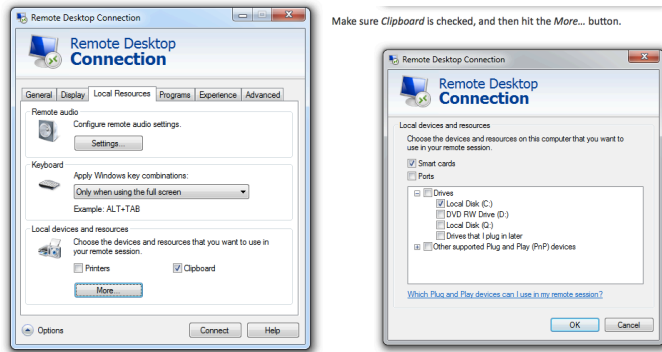


If you run into to a problem where a file is corrupted and the normal transfer to an external USB hard drive fails, you can manually download the scan files to your laptop.

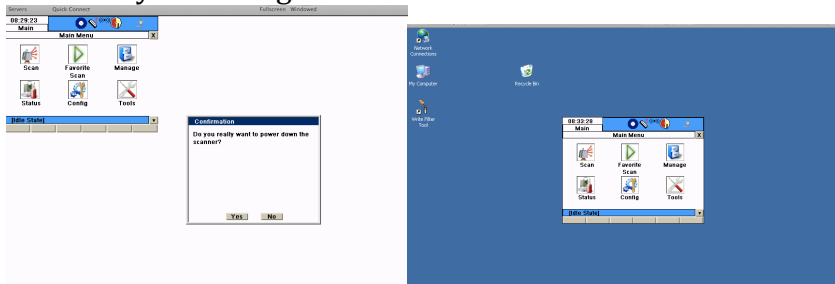
1. Configure remote desktop on your PC to share folders:



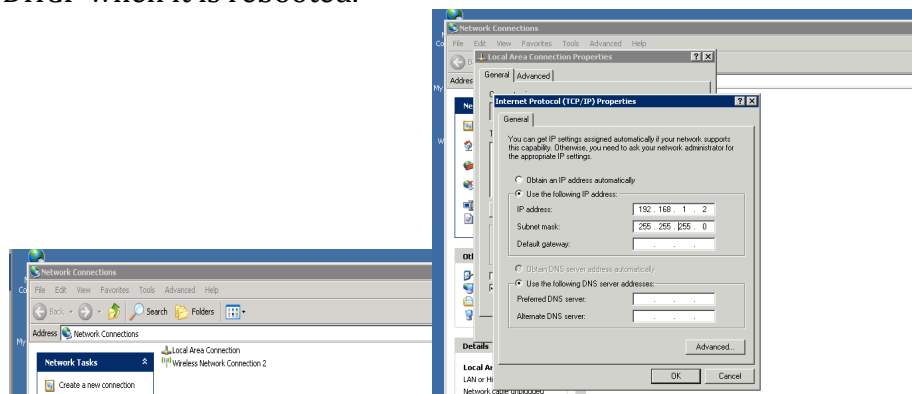
2. Connect to the scanner using Remote Desktop or Cord (Mac).

- Typically this is done wireless using the Windy31.
- The Windy31 router will assign your PC an IP address.
- The login/password is sbc/sbc

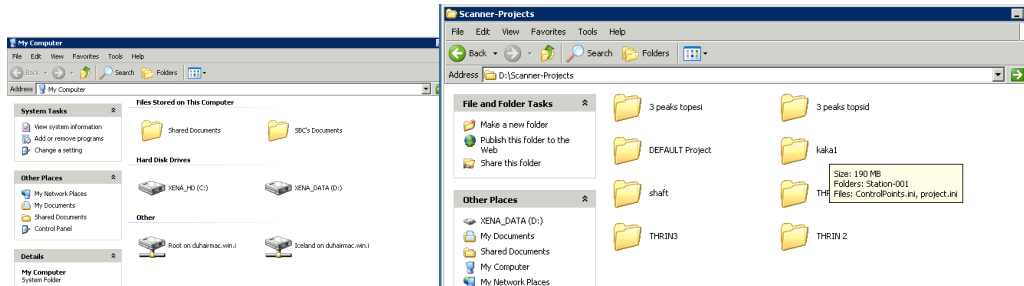
3. To get to the file system, close the “Main Menu” select “No” and then left click the mouse key. The images show the before and after screenshots.



3. Reconfigure the scanner's Ethernet port from DHCP to a static IP (one that your computer can connect too (e.g. 192.168.1.2)). Note: the scanner will default back to DHCP when it is rebooted.



4. Reconnect to the scanner using the Ethernet cable and new configuration
5. Copy the necessary Scanner-Projects directory (located in D:\Scanner-Projects) to the shared folder on the PC.
 - This transfer takes a while so take a break and go fetch yourself a beer.



5. These files then can be imported into Cyclone as part of the normal workflow process.