

## *RECEIVER IN REMOTE MONITOR*

You will need to disconnect and then reconnect the internal battery and reinstall firmware using WINFLASH

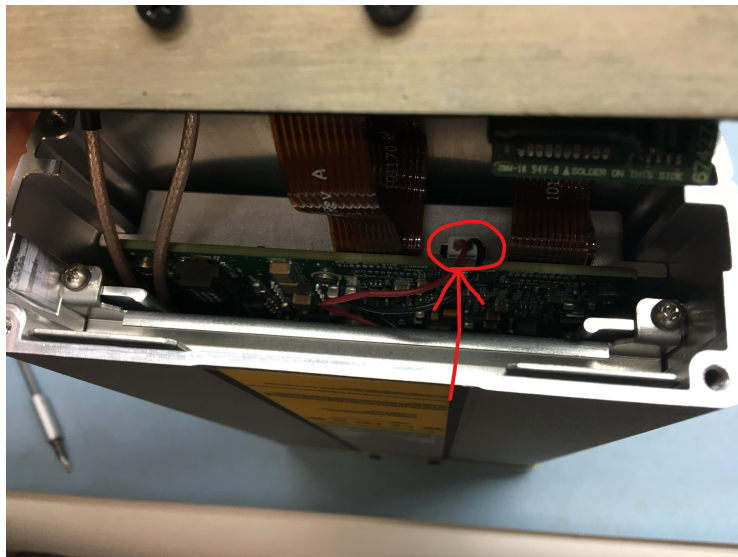
### **REMOVING/DISCONNECTING A NETR9 INTERNAL BATTERY**

You will need a T-10 Torx tip to complete this procedure.

- 1) Remove the black rubber bumper from the back of the NetR9, and remove the four T-10 Torx screws circled in red.



- 2) Carefully remove the cover as cables will be attached to this piece. Once open locate the white plug with red and black wire going to it circled in red.



- 3) Unplug this cable, and let the unit sit for a minute to ensure all energy is drained.
- 4) If removing the battery

- a. Remove the two Philips head screws holding the battery bracket and the battery should slide out.
- 5) Plug the battery cable back in (if reusing/installing battery) , reinstall cover and bumper
- 6) Test receiver.

## WINFLASH INSTRUCTIONS

1. You will need a computer with a Windows operating system to run the program called WINFLASH. The computer will also need a serial port.
  - You can get a copy of WINFLASH [here](#).
    - a. Attached are screenshots of the program running.
2. The Winflash program uses the serial port of the receiver to communicate to it.
  - a. You will need the Trimble cable that powers the receiver and has a RS232 adapter too.
3. Update the firmware to latest version according to the receiver's firmware date.  
If unknown v5.22 usually works