

# Altus APS3G Channel Configuration

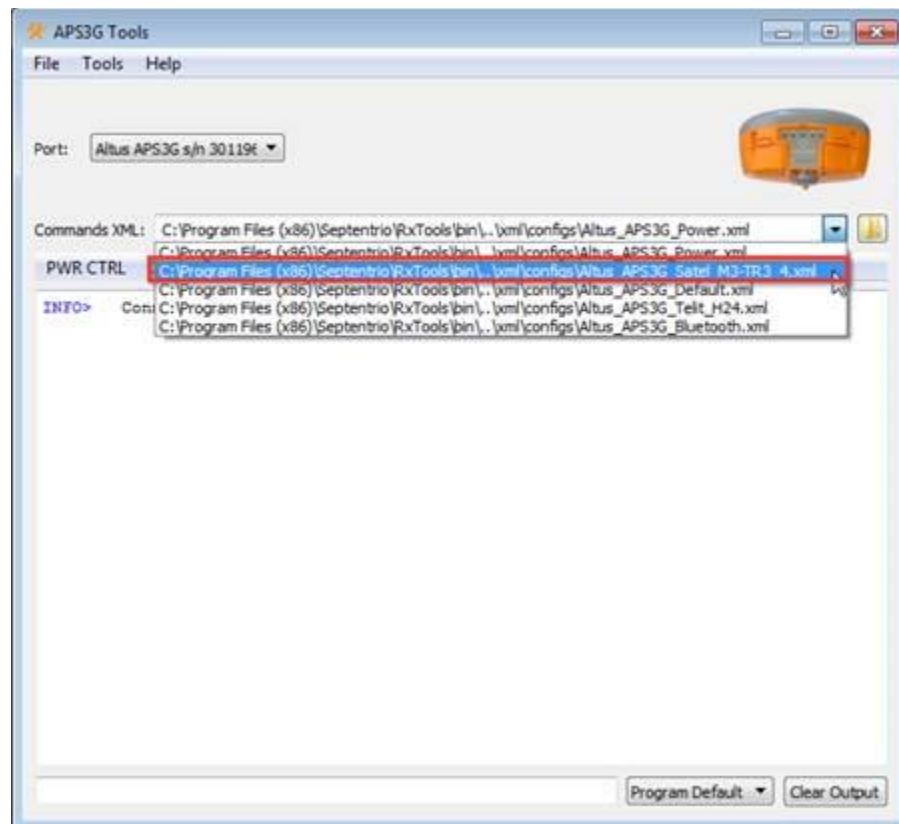
## 1) Changing Channel Frequency in Altus APS3G

The default channel map (440-470MHz) is loaded for USA frequencies in APS-3 and APS3G receivers. However you can change the channel map in the APS-3 and APS3G receivers to 406-430Mhz. Two UHF antennas are included with APS3G: 406-430 and 440-470MHz.

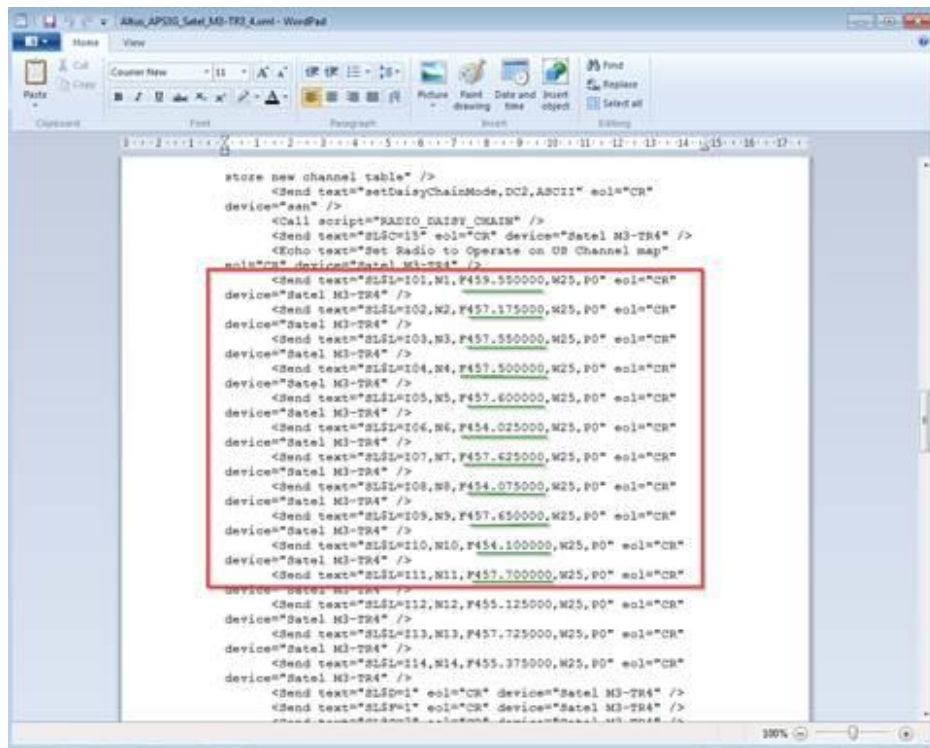
The procedures for changing the frequency range are different for APS3G with serial numbers >25000 and APS-3 with serial numbers <25000. You can change the channel map in APS3G using APS3G Tools, which is part of latest version of RxTools.

### a) Procedure for changing the frequency table in APS-3 with serial numbers <25000):

- i) Open APS3G Tools and connect to the right port.
- ii) Look for the script for the UHF radio. In my case it's in the following address in my computer as you see below: "C:\Program Files (x86)\Septentrio\RxTools\xml\configs"

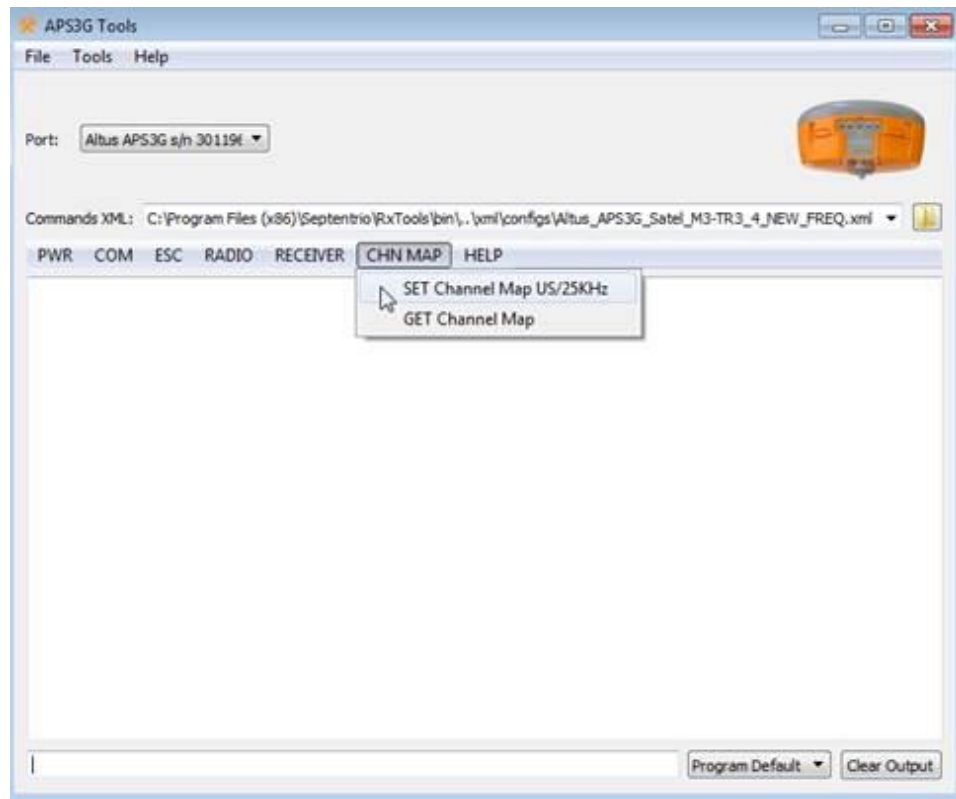


- iii) When you open the xml file, in the middle of the file, you can see the frequencies.
- iv) Change the frequencies or channel spacing or Power and copy the xml file with different name (to not lose the original one)

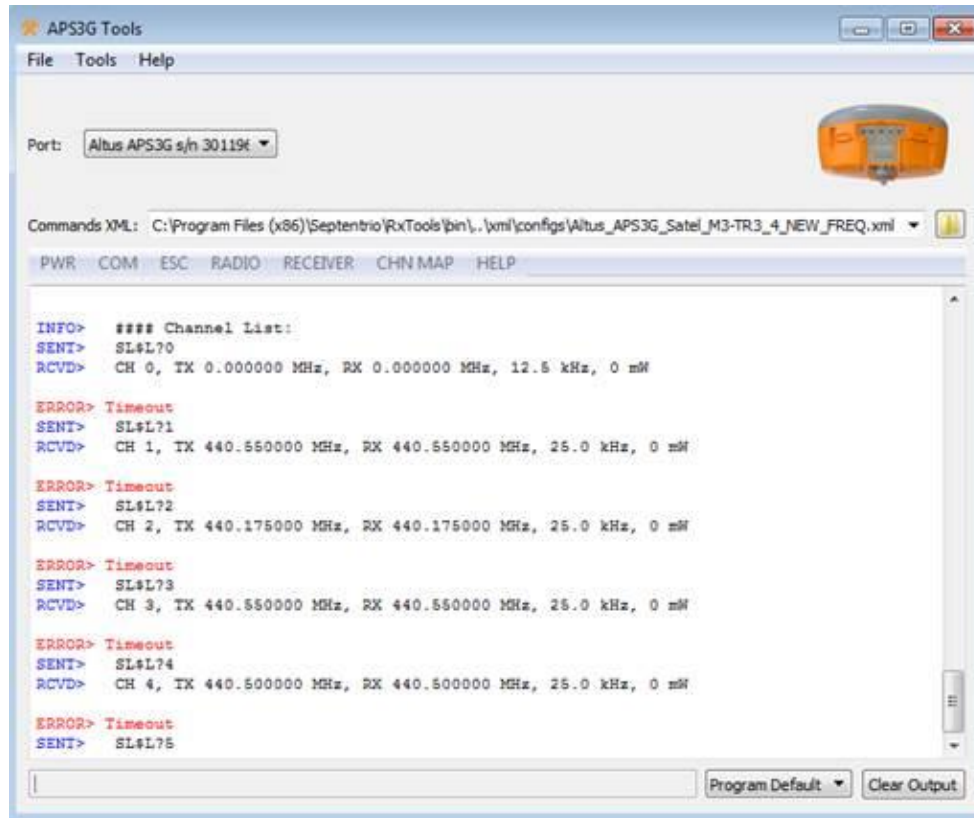


```
store new channel table" />
<Send text="setDaisyChainMode,DC2,ASCII" eol="CR"
device="asn" />
<Call script="RADIO DAISY CHAIN" />
<Send text="SLSC=13" eol="CR" device="Satel M3-TR4" />
<Echo text="Set Radio to Operate on US Channel map"
eol="CR" device="Satel M3-TR4" />
<Send text="SLSL=101,M1,F455.550000,W25,P0" eol="CR"
device="Satel M3-TR4" />
<Send text="SLSL=102,M2,F457.175000,W25,P0" eol="CR"
device="Satel M3-TR4" />
<Send text="SLSL=103,M3,F457.550000,W25,P0" eol="CR"
device="Satel M3-TR4" />
<Send text="SLSL=104,M4,F457.500000,W25,P0" eol="CR"
device="Satel M3-TR4" />
<Send text="SLSL=105,M5,F457.600000,W25,P0" eol="CR"
device="Satel M3-TR4" />
<Send text="SLSL=106,M6,F454.025000,W25,P0" eol="CR"
device="Satel M3-TR4" />
<Send text="SLSL=107,M7,F457.625000,W25,P0" eol="CR"
device="Satel M3-TR4" />
<Send text="SLSL=108,M8,F454.075000,W25,P0" eol="CR"
device="Satel M3-TR4" />
<Send text="SLSL=109,M9,F457.650000,W25,P0" eol="CR"
device="Satel M3-TR4" />
<Send text="SLSL=110,M10,F454.100000,W25,P0" eol="CR"
device="Satel M3-TR4" />
<Send text="SLSL=111,M11,F457.700000,W25,P0" eol="CR"
device="Satel M3-TR4" />
<Send text="SLSL=112,M12,F455.125000,W25,P0" eol="CR"
device="Satel M3-TR4" />
<Send text="SLSL=113,M13,F457.725000,W25,P0" eol="CR"
device="Satel M3-TR4" />
<Send text="SLSL=114,M14,F455.375000,W25,P0" eol="CR"
device="Satel M3-TR4" />
<Send text="SLSD=1" eol="CR" device="Satel M3-TR4" />
<Send text="SLSP=1" eol="CR" device="Satel M3-TR4" />
```

- v) Then connect again to APS3G and select the desired XML file (where you already changed frequencies)
- vi) PWR ☐ ON
- vii) COM ☐ SET DAISY CHAIN TO RADIO
- viii) CHN MAP ☐ SET Channel Map US/25KHz (Use this tab for saving any configuration).



- ix) To check the frequencies in your receiver, select “CHN MAP □ GET Channel Map”.  
You can see below the new values of the Channels I made here for this test:



x) When you finish, select “ESC □ TO RECEIVER”

b) **Procedure for configuring Frequency Channel of APS-3 (Serial Number <25000) with Satel Radio.**

i) Please download the APS-3G\_USB\_3.4.0.Zip file from Septentrio.

**APS-3 (End-of-Life)**

Below you will find the last release for the APS-3/APS-3G

The APS-3/APS-3G are no longer available for sale and have been replaced by **Altus APS3G** offering more functionality and flexibility. This section applies only to older models of APS-3 and APS-3G models.

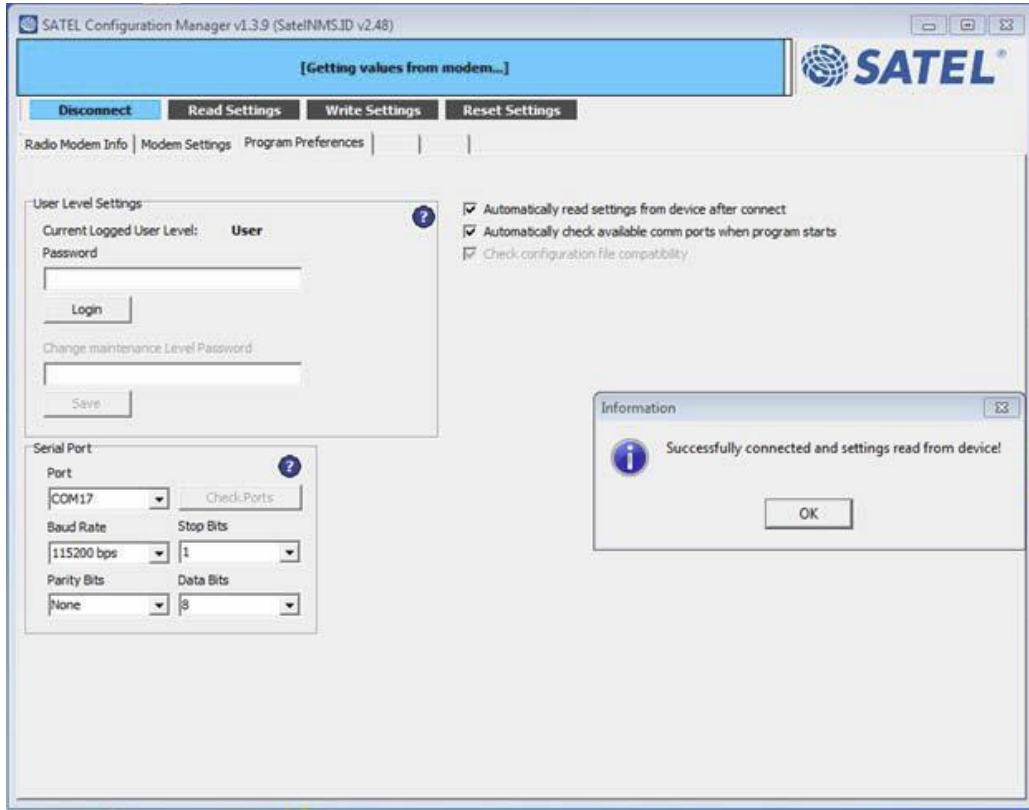
Please refer to the End-of-Life notification below for further details

> 20150202\_default\_config\_scripts.zip (4.47 KB)

> aps-3\_quick\_start\_rev3.0.0\_a6.pdf (925.81 KB)

> **aps-3g\_usb\_3.4.0.zip (152.84 MB)**

- ii) You will find all necessary file and procedure for uploading the file in UHF Radio/Satel folder.
- iii) There is one item missing in the document. Password which is maintenance.



c) **XML line changes**

- i) 406-430MHz \*(saved as Altus\_APS3G\_Satel\_M3-TR3\_4 - 406-430MHz.xml)

```
<Send text="SL$S=I01,N1,F406.000000,W25,P0" eol="CR" device="Satel M3-TR4" />
<Send text="SL$S=I02,N2,F408.000000,W25,P0" eol="CR" device="Satel M3-TR4" />
<Send text="SL$S=I03,N3,F410.000000,W25,P0" eol="CR" device="Satel M3-TR4" />
<Send text="SL$S=I04,N4,F412.000000,W25,P0" eol="CR" device="Satel M3-TR4" />
<Send text="SL$S=I05,N5,F414.000000,W25,P0" eol="CR" device="Satel M3-TR4" />
<Send text="SL$S=I06,N6,F417.000000,W25,P0" eol="CR" device="Satel M3-TR4" />
<Send text="SL$S=I07,N7,F418.000000,W25,P0" eol="CR" device="Satel M3-TR4" />
<Send text="SL$S=I08,N8,F419.000000,W25,P0" eol="CR" device="Satel M3-TR4" />
<Send text="SL$S=I09,N9,F420.000000,W25,P0" eol="CR" device="Satel M3-TR4" />
<Send text="SL$S=I10,N10,F422.000000,W25,P0" eol="CR" device="Satel M3-TR4" />
<Send text="SL$S=I11,N11,F424.000000,W25,P0" eol="CR" device="Satel M3-TR4" />
<Send text="SL$S=I12,N12,F426.000000,W25,P0" eol="CR" device="Satel M3-TR4" />
<Send text="SL$S=I13,N13,F428.000000,W25,P0" eol="CR" device="Satel M3-TR4" />
<Send text="SL$S=I14,N14,F430.000000,W25,P0" eol="CR" device="Satel M3-TR4" />
```

- ii) 440-470MHz (default file called Altus\_APS3G\_Satel\_M3-TR3\_4.xml)

<Send text="SL\$L=I01,N1,F459.550000,W25,P0" eol="CR" device="Satel M3-TR4" />  
<Send text="SL\$L=I02,N2,F457.175000,W25,P0" eol="CR" device="Satel M3-TR4" />  
<Send text="SL\$L=I03,N3,F457.550000,W25,P0" eol="CR" device="Satel M3-TR4" />  
<Send text="SL\$L=I04,N4,F457.500000,W25,P0" eol="CR" device="Satel M3-TR4" />  
<Send text="SL\$L=I05,N5,F457.600000,W25,P0" eol="CR" device="Satel M3-TR4" />  
<Send text="SL\$L=I06,N6,F454.025000,W25,P0" eol="CR" device="Satel M3-TR4" />  
<Send text="SL\$L=I07,N7,F457.625000,W25,P0" eol="CR" device="Satel M3-TR4" />  
<Send text="SL\$L=I08,N8,F454.075000,W25,P0" eol="CR" device="Satel M3-TR4" />  
<Send text="SL\$L=I09,N9,F457.650000,W25,P0" eol="CR" device="Satel M3-TR4" />  
<Send text="SL\$L=I10,N10,F454.100000,W25,P0" eol="CR" device="Satel M3-TR4" />  
<Send text="SL\$L=I11,N11,F457.700000,W25,P0" eol="CR" device="Satel M3-TR4" />  
<Send text="SL\$L=I12,N12,F455.125000,W25,P0" eol="CR" device="Satel M3-TR4" />  
<Send text="SL\$L=I13,N13,F457.725000,W25,P0" eol="CR" device="Satel M3-TR4" />  
<Send text="SL\$L=I14,N14,F455.375000,W25,P0" eol="CR" device="Satel M3-TR4" />