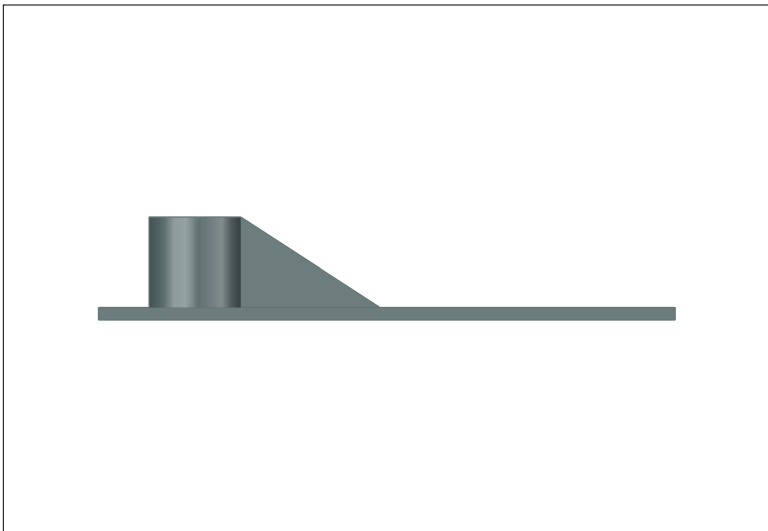
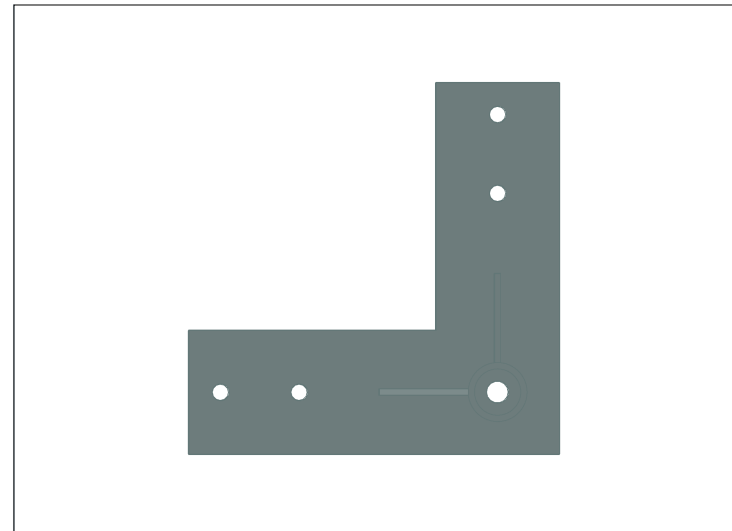


Isometric View



Side View



Top View



BUILDING MOUNT

OVERVIEW

CONTACT:
303.381.7500
WWW.UNAVCO.ORG

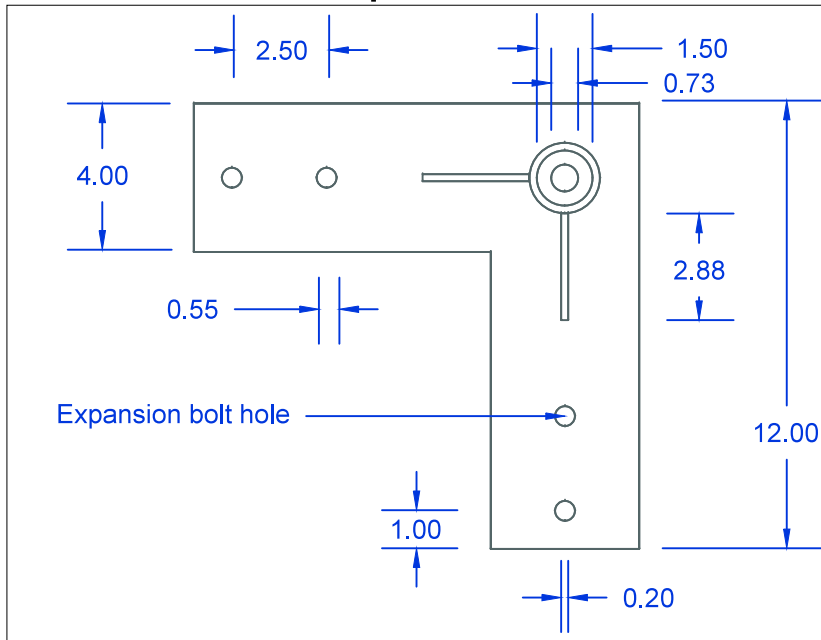
ADDRESS:
6350 NAUTILUS DR.
BOULDER, CO 80301

DRAWN BY:
MICHAEL FEND

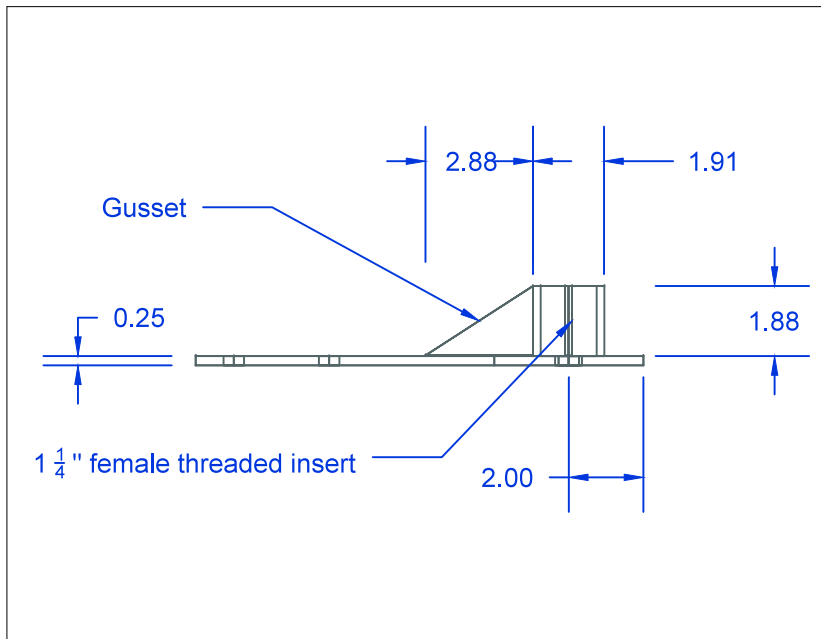
REVIEWED BY:
JIM NORMANDEAU

DATE CREATED:
10/08/2014

Top View



Side View



Notes:

- 304 stainless steel
- 5 3" x 1/2" expansion bolts
- 1 1/4" threaded pipe (1-2' long)
- Standard pipe thread
- Screw into center mast
- 40 gauge
- Anchor bolts with epoxy
- All dimensions are in inches
- JB weld is required to fix the threaded pipe mast to building mount

UNAVCO

BUILDING MOUNT
DIMENSIONS

CONTACT:
303.381.7500
WWW.UNAVCO.ORG

ADDRESS:
6350 NAUTILUS DR.
BOULDER, CO 80301

DRAWN BY:
MICHAEL FEND

REVIEWED BY:
JIM NORMANDEAU

DATE CREATED:
10/08/2014