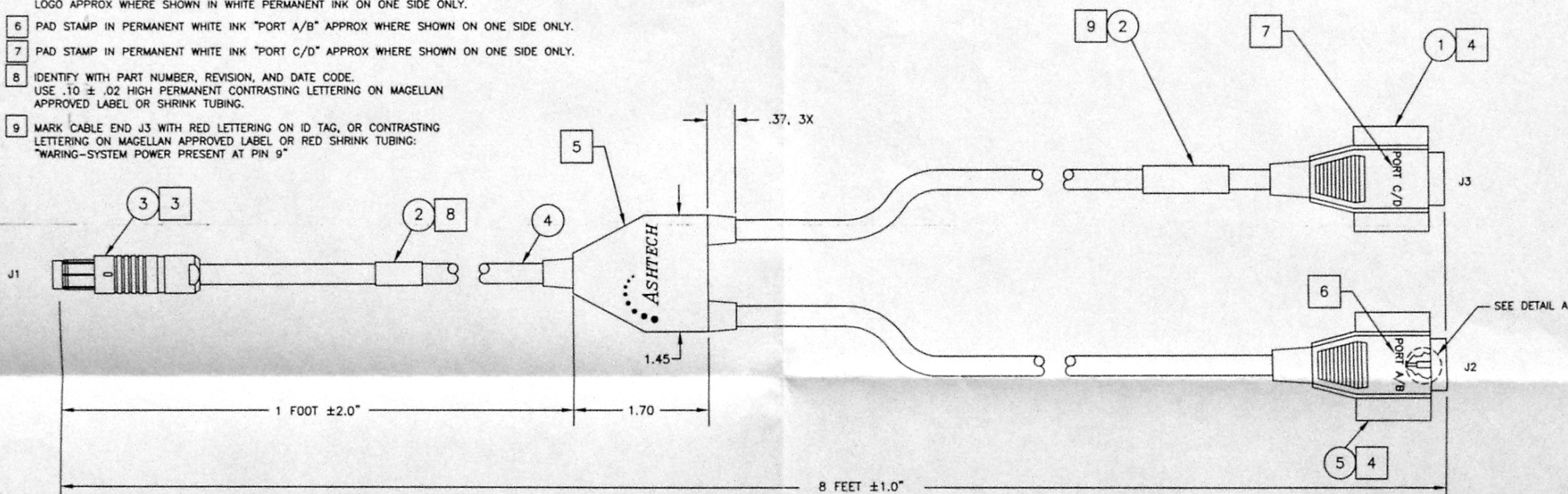
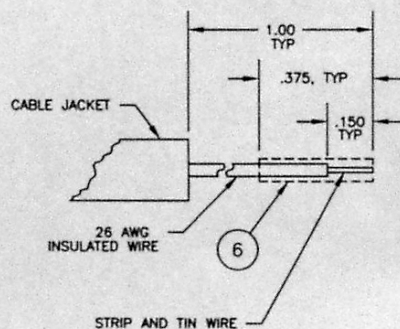
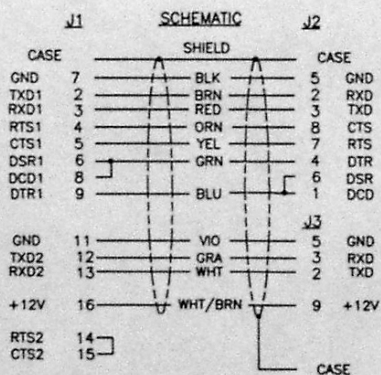


1. TO BE MANUFACTURED TO ANSI/IPC-A-610A WORKMANSHIP STANDARDS.
2. THIS IS A WATERPROOF CABLE. AS SUCH ALL MOLDED AREAS MUST BE WATERPROOF.
3. USE ITEM 6 ON ALL J1 CONNECTIONS. APPLY ONE DROP OF LOCKTITE 242 OR EQUIV TO CLAMP NUT INTERNAL THREAD.
4. MOLD OVER ITEM 5, AND 1 WITH BLACK POLYURETHANE MATERIAL.
5. ENSURE THAT ALL THREE SHIELDS FROM ALL THREE CABLE "LEGS" ARE SOLDERED TOGETHER INSIDE THE "Y" CONNECTION.  
MOLD OVER "Y" CONNECTION WITH BLACK POLYURETHANE MATERIAL AND PAD STAMP LOGO APPROX WHERE SHOWN IN WHITE PERMANENT INK ON ONE SIDE ONLY.
6. PAD STAMP IN PERMANENT WHITE INK "PORT A/B" APPROX WHERE SHOWN ON ONE SIDE ONLY.
7. PAD STAMP IN PERMANENT WHITE INK "PORT C/D" APPROX WHERE SHOWN ON ONE SIDE ONLY.
8. IDENTIFY WITH PART NUMBER, REVISION, AND DATE CODE.  
USE .10 ± .02 HIGH PERMANENT CONTRASTING LETTERING ON MAGELLAN APPROVED LABEL OR SHRINK TUBING.
9. MARK CABLE END J3 WITH RED LETTERING ON ID TAG, OR CONTRASTING LETTERING ON MAGELLAN APPROVED LABEL OR RED SHRINK TUBING:  
"WARNING—SYSTEM POWER PRESENT AT PIN 9"

REVISIONS				
ZONE	REV	DESCRIPTION	DATE	APRV
	A	RELEASE TO MFG PER ECO 52176	8-31-00	R.C.G
	B	REVISED PER ECO 52298	3-1-01	RCG

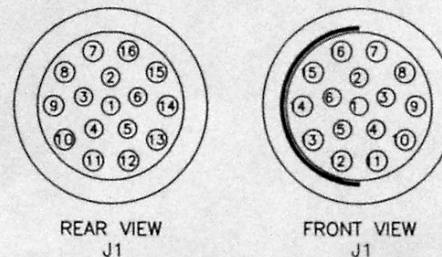
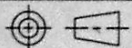



- RED DOT ON BODY OF CONNECTOR IS IN 12 O'CLOCK POSITION WHEN READING THIS DIAGRAM



DETAIL A

SCALE : 3X  
2 PL



ITEM	PART NUMBER	DESCRIPTION	MANUFACTURER	QTY
PARTS LIST				
TOLERANCES UNLESS OTHERWISE SPECIFIED		APPROVALS	DATE	
DEC ANGLES		DRAWN	7-23-00	
.XX [0.X] ± .1		PM/H. NGUYEN	7-23-00	
.XXX [0.XX] ± .04		CHECKED	8-31-00	
BRACKETED DIMENSIONS ARE IN MILLIMETERS		R. GILLANDERS	8-31-00	
MATERIAL		APPROVED	 AEROSPACE PRECISION PRODUCTS ASSY. CABLE, I/O, WP Z-RS/MET STATION	
N/A				
FINISH				
N/A		SIZE C DRAWING NO. A730417 REV B	FULL DO NOT SCALE DRAWING SHEET 1 OF 1	
		UPDATED BY NGUYEN 7-23-00		