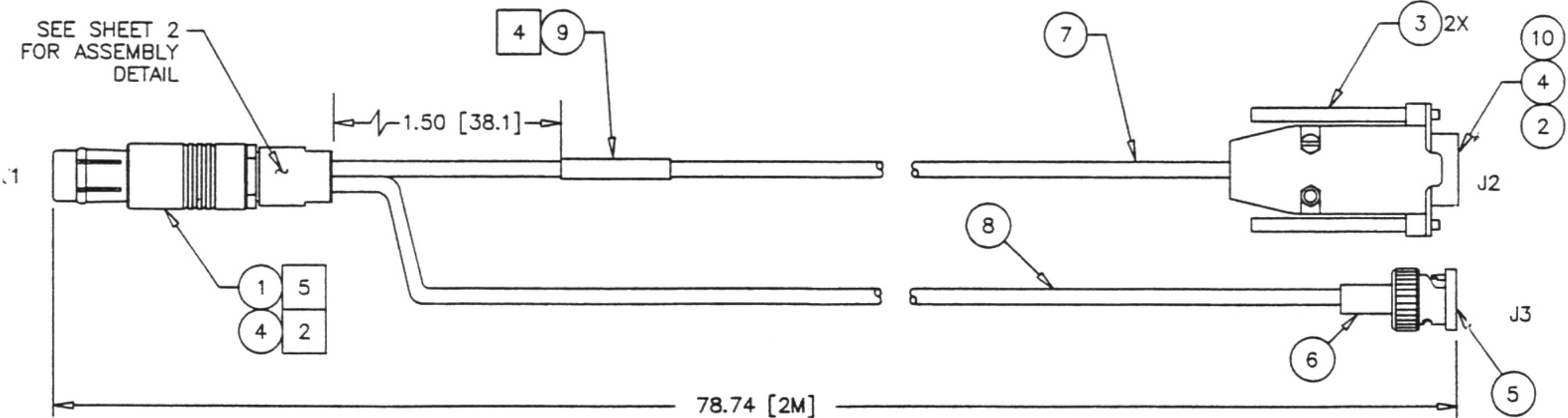
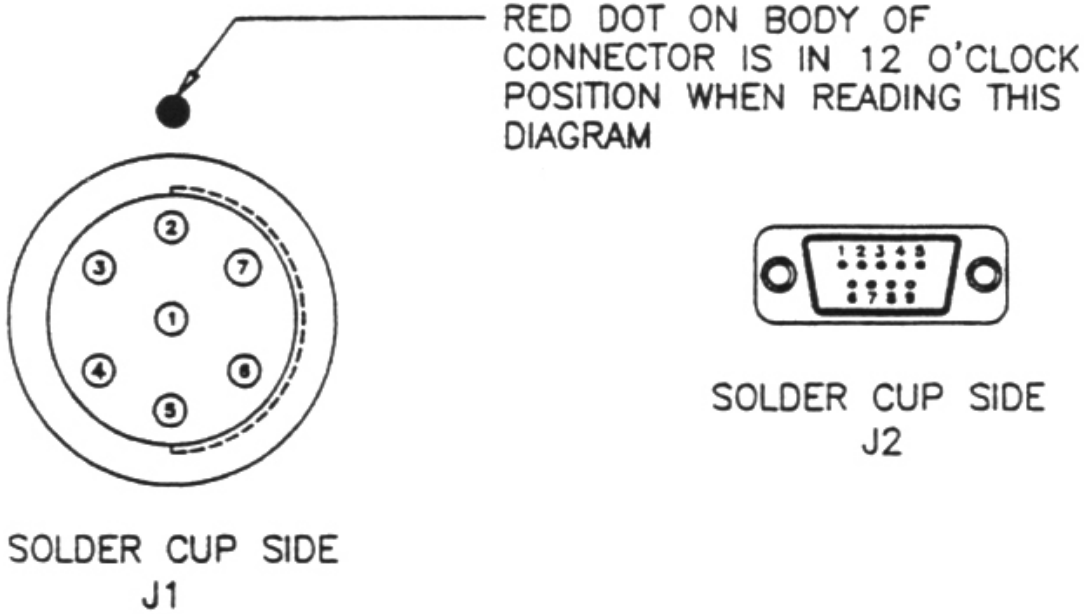


NOTES:

1. ASSEMBLE PER ANSI/IPC-A-610B.
2. INSTALL ITEM 4, .250 [6.35] LONG ON ALL J1 AND J2 SOLDER CUPS.
3. APPLY SMALL DROP OF ITEM 15 TO J1 COLLET INTERNAL THREADS.
4. MARK BOM ASSEMBLY NUMBER, BOM REVISION, VENDOR I.D. AND DATE CODE (DRAWING AND BOM REVISION WON'T ALWAYS MATCH). USE .10±.03 [2.5±0.8] HIGH PERMANENT CONTRASTING LETTERING ON LABEL OR ASHTECH APPROVED SHRINK TUBING.
5. IT IS PERMISSABLE TO CUT 3 STRANDS MAX FROM THE INDIVIDUAL CONDUCTORS IN ORDER TO FIT INTO J1 AND J2 SOLDER CUPS.

REVISIONS				
ZONE	REV	DESCRIPTION	DATE	APPROV
	A	MANUFACTURING RELEASE PER ECO #51275A	4-5-98	ESD



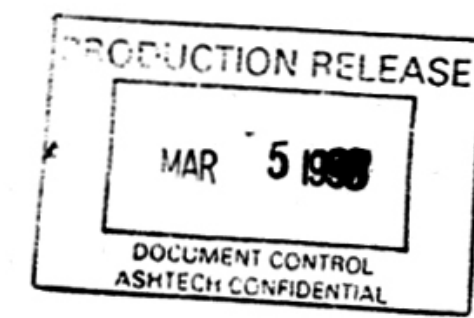
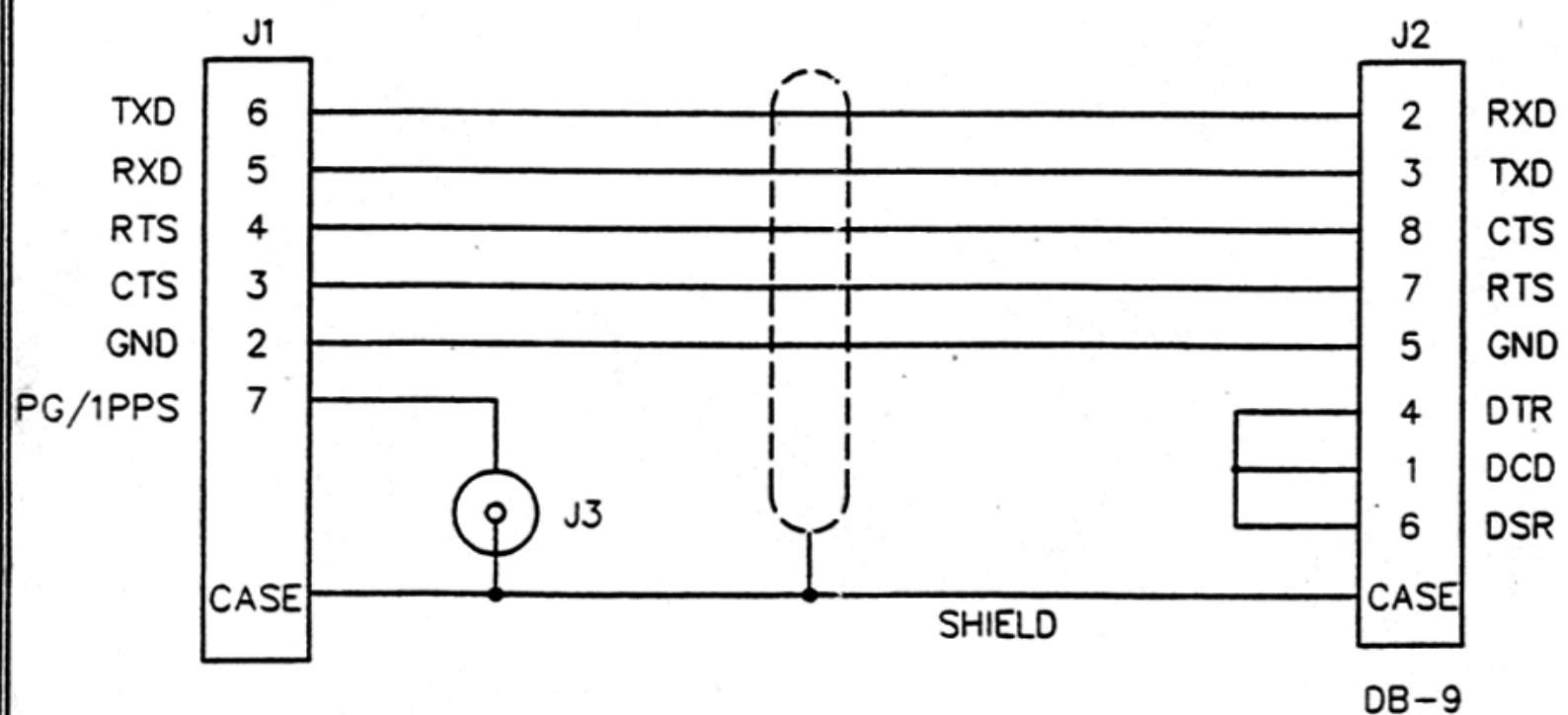
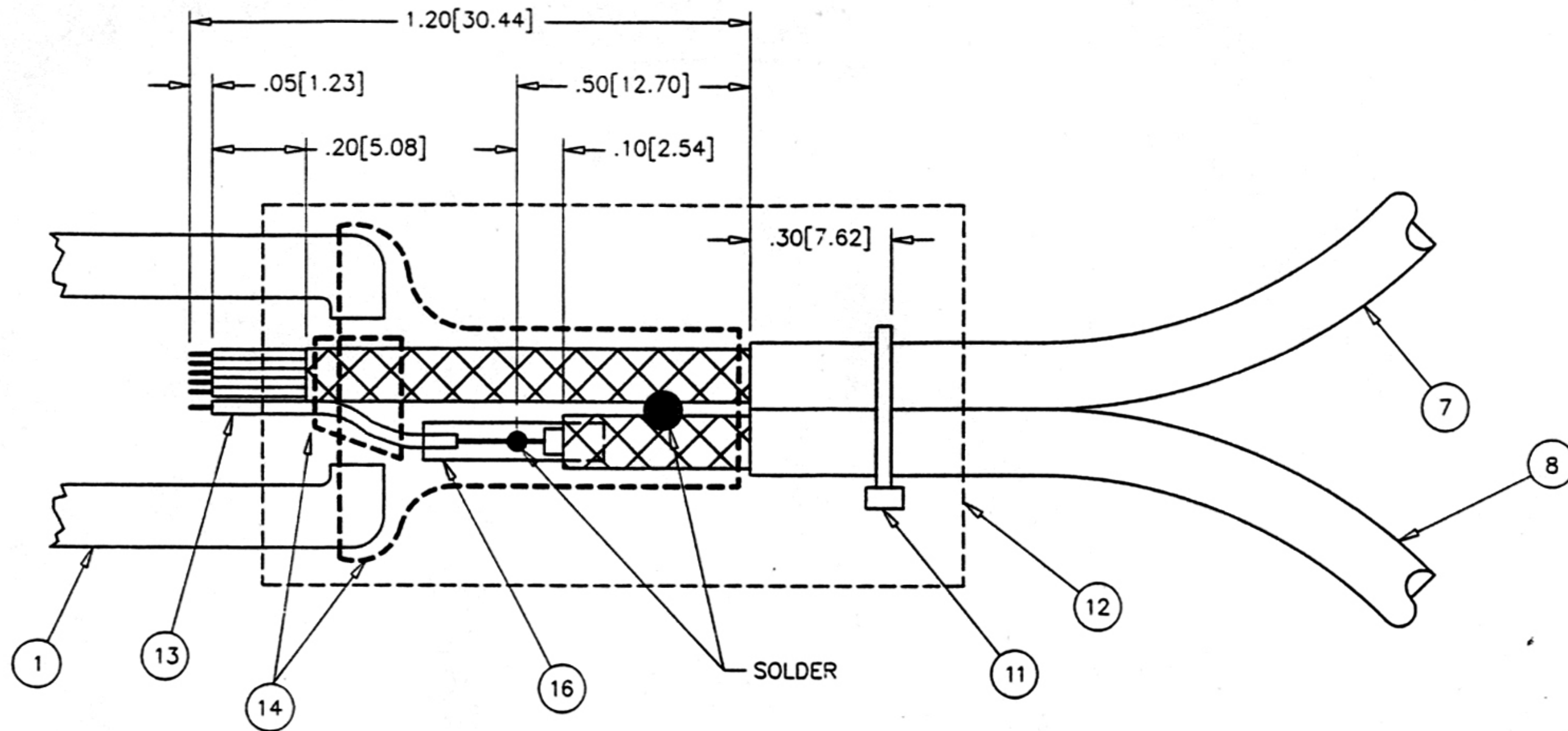
PRODUCTION RELEASE

MAR 5 1998

UNLESS OTHERWISE SPECIFIED:  
DIMENSIONS ARE IN INCHES [mm].  
DIMENSIONS & TOLERANCES ARE  
PER ANSI Y14.5M-1982, ASMR ARE  
PER ANSI Y1.1-1972.

THIS DRAWING AND SPECIFICATIONS  
HEREIN ARE THE PROPRIETARY  
PROPERTY OF ASHTECH, INC. AND  
SHALL NOT BE REPRODUCED, COPIED,  
OR DISCLOSED, IN WHOLE OR PART,  
WITHOUT THE EXPRESS WRITTEN  
PERMISSION OF A DULY AUTHORIZED  
ASHTECH EMPLOYEE.

ITEM	PART NUMBER	DESCRIPTION	MANUFACTURER	QTY
PARTS LIST				
TOLERANCES UNLESS OTHERWISE SPECIFIED		APPROVALS	DATE	 SUNNYVALE, CA 94086  CABLE ASSEMBLY, RS232, 7P102, DB9F, PG/1PPS  SIZE B DRAWING NO. A730181 REV A SCALE: 1=1 DO NOT SCALE DRAWING SHEET 1 OF 2
DEC .XX [0.X] ± .25 [6.4] ANGLES .XX [0.X] ± .005 [0.12] BRACKETED DIMENSIONS ARE IN MILLIMETERS		DESIGN P. MATHEWSON	2-6-98	
MATERIAL N/A		CHK ACAD		
FINISH N/A		CHK	3/7/98	



SIZE	DRAWING NO.	REV
B	A730181	A
SCALE: 1=1	DO NOT SCALE DRAWING	SHEET: 2