

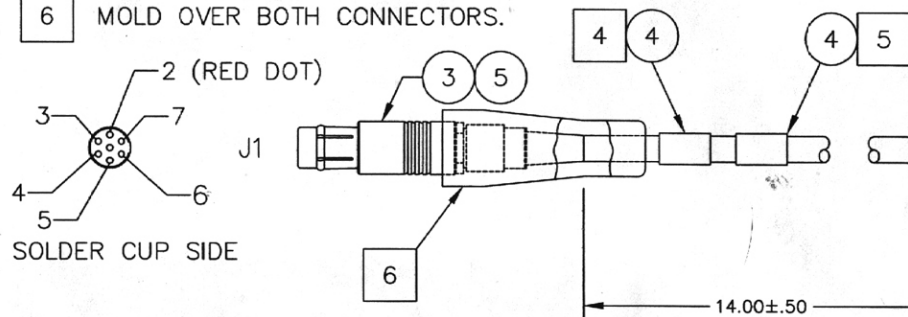
# NOTES:

1. ASSEMBLE PER ANSI/IPC-A-610B, WORKMANSHIP STANDARDS.
2. INSTALL HEATSHRINK TUBING ON ALL CONNECTOR PINS.
3. JUMPER PINS 1, 4, AND 6 ON THE DB9 CONNECTOR PINS.

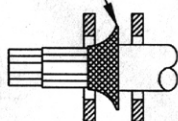
4 MARK BOM ASSEMBLY NUMBER, BOM REVISION, VENDOR I.D. AND DATE CODE (DRAWING AND BOM REVISION WON'T ALWAYS MATCH). USE  $.10 \pm .03$  [2.5  $\pm$  0.8] HIGH PERMANENT CONTRASTING LETTERING ON LABEL OR ASHTECH APPROVED SHRINK TUBING.

5 INSTALL A LABEL READING "PC-DOWNLOAD"

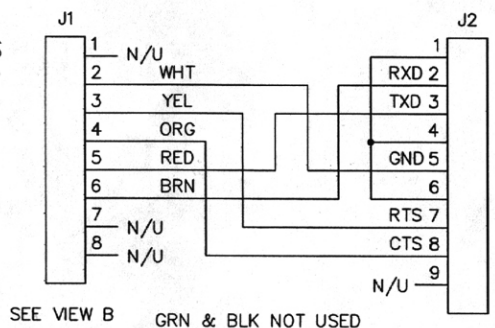
6 MOLD OVER BOTH CONNECTORS.



TERMINATE SHIELD PER MFR INSTRUCTIONS

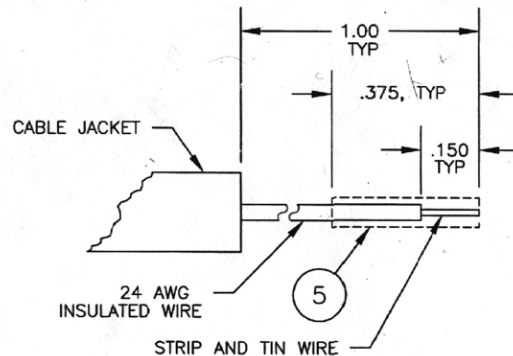


VIEW B  
SCALE: NONE

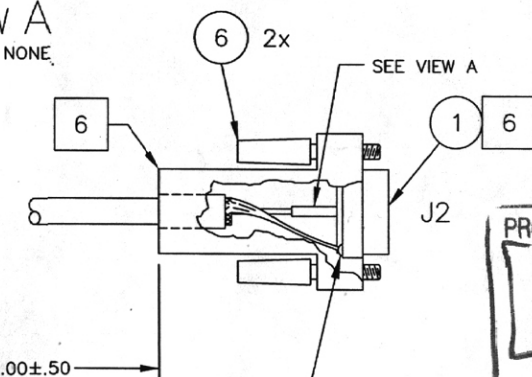


SEE VIEW B GRN & BLK NOT USED

CASE SHIELD CASE



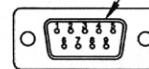
VIEW A  
SCALE: NONE



SHIELD WIRE TO BE SOLDERED TO INSIDE METAL PART OF CONNECTOR APPROX AS SHOWN

PRODUCTION RELEASE  
NOV 08 2002  
DOCUMENT CONTROL  
THALES NAVIGATION

MATCH WIRE COLOR WITH SERIAL PORT PIN NUMBER SEE SCHEMATIC.



ITEM	PART NUMBER	DESCRIPTION	MANUFACTURER	QTY
PARTS LIST				
TOLERANCES UNLESS OTHERWISE SPECIFIED				
DEC ANGLES				
.XX [0.X] ± .10 [2.5]				
.XXX [0.XX] ± .005 [0.12]				
BRACKETED DIMENSIONS ARE IN MILLIMETERS				
MATERIAL	N/A	APPROVALS	DATE	
FINISH	N/A	DRAWN S. MEAD	8/7/97	
		CHECKED		
		APPROVED	7/25/98	
		UPDATED		
ASHTECH SUNNYVALE, CA 94086				
CABLE ASSEMBLY, 7P-DB9, COIL				
SIZE	B	DRAWING NO.	A730178	REV A
SCALE: NONE DO NOT SCALE DRAWING SHEET 1 OF 1				

UNLESS OTHERWISE SPECIFIED:  
DIMENSIONS ARE IN INCHES [mm]  
DIMENSIONS & TOLERANCES ARE  
PER ANSI Y14.5M-1982, ABR ARE  
PER ANSI Y1.1-1972.

THIS DRAWING AND SPECIFICATIONS  
HEREIN ARE THE PROPRIETARY  
PROPERTY OF ASHTECH, INC. AND  
SHALL NOT BE REPRODUCED, COPIED,  
OR DISCLOSED, IN WHOLE OR PART,  
WITHOUT THE EXPRESS WRITTEN  
PERMISSION OF A DULY AUTHORIZED  
ASHTECH EMPLOYEE.