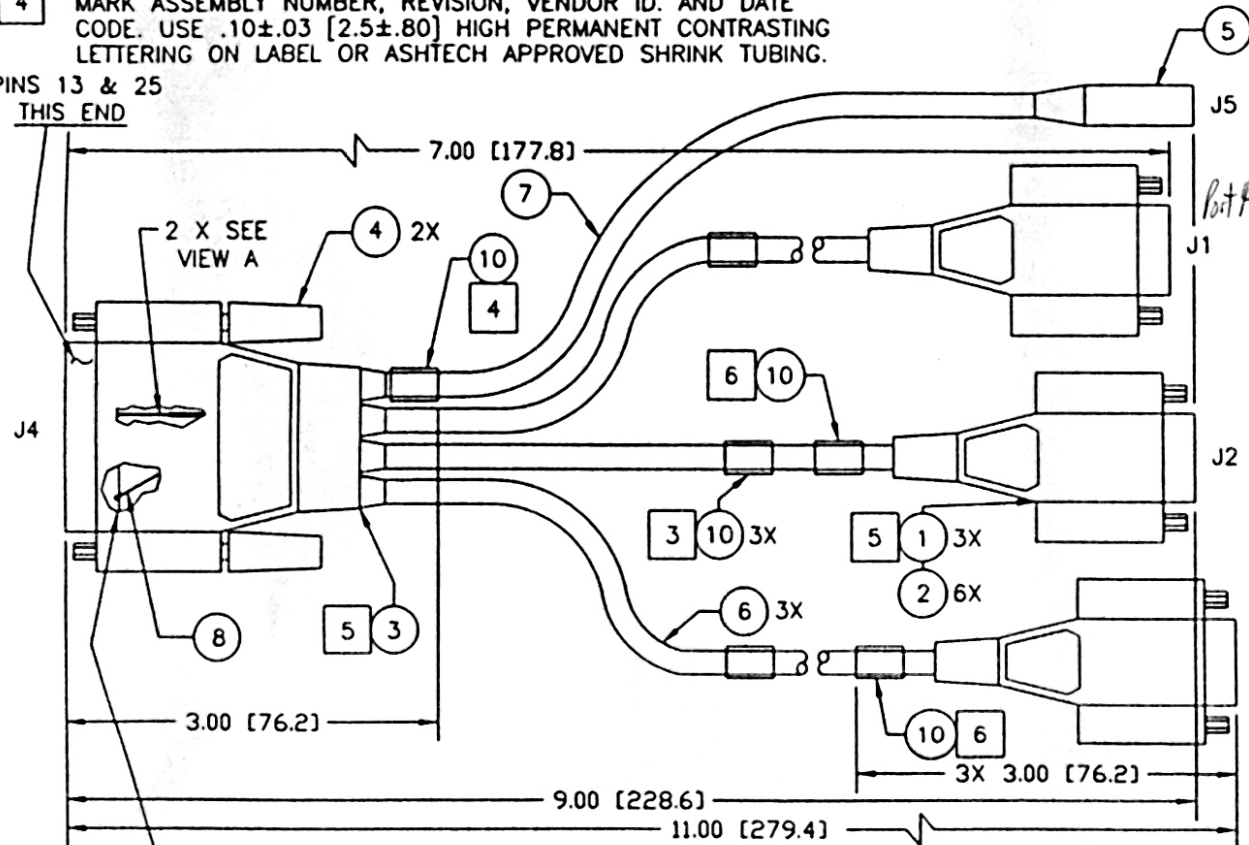
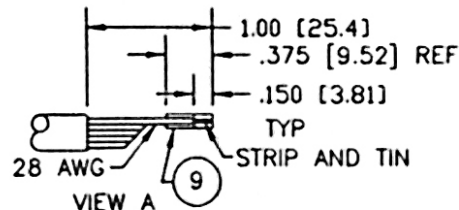


1. ASSEMBLE PER ANSI/IPC-A-610A, CLASS 2 STANDARDS.
2. CONNECT PIN 13 OF J4 TO CONNECTOR HOUSING USING 26AWG WIRE (ITEM 8). CONNECT PIN 4 TO 6 OF J1 WITH ITEM 8.
3. IDENTIFY CABLE END J1 "PORT A-1 PPS OUT", J2 "PORT B-EVENT IN", J3 "PORT C-BOOT".
4. MARK ASSEMBLY NUMBER, REVISION, VENDOR ID. AND DATE CODE. USE .10±.03 [2.5±.80] HIGH PERMANENT CONTRASTING LETTERING ON LABEL OR ASHTECH APPROVED SHRINK TUBING.

THIS END



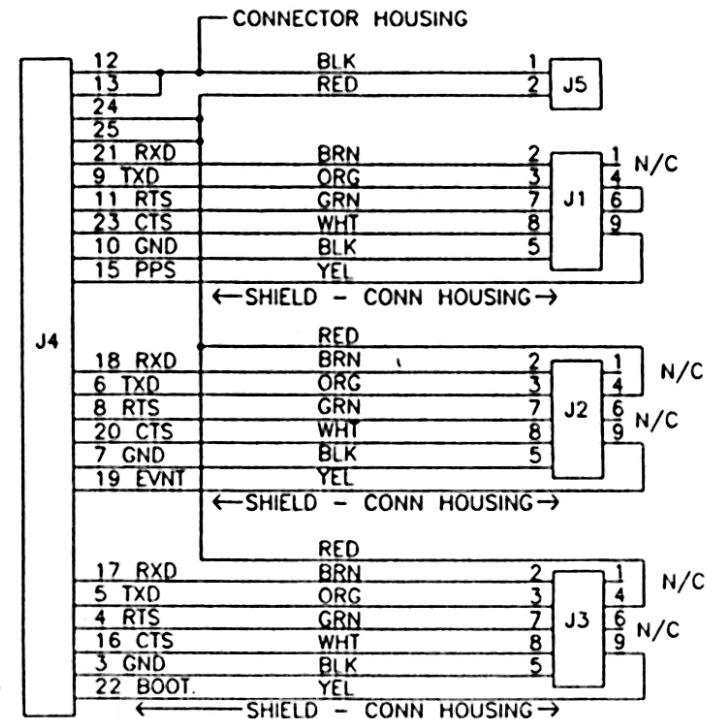
SHIELD WIRE TO BE
SOLDER TO INSIDE
METAL PART OF
CONNECTOR




UNLESS OTHERWISE SPECIFIED:
DIMENSIONS ARE IN INCHES (mm).
DIMENSIONS & TOLERANCES ARE
PER ANSI Y14.5M-1982, ABBEY ARE
PER ANSI Y1.1-1972.

THIS DRAWING AND SPECIFICATIONS
HEREIN ARE THE PROPRIETARY
PROPERTY OF ASHTECH, INC. AND
SHALL NOT BE REPRODUCED, COPIED,
OR DISCLOSED, IN WHOLE OR PART,
WITHOUT THE EXPRESS WRITTEN
PERMISSION OF A DULY AUTHORIZED
ASHTECH EMPLOYEE.

6 MARK CABLE END, J2 AND J3 WITH RED ID TAG
"WARNING-SYSTEM POWER PRESENT AT PIN 4".



| ITEM | PART NUMBER | DESCRIPTION | MANUFACTURER | CITY |
|---|-------------|--|---------------------|---|
| PARTS LIST | | | | |
| TOLERANCES UNLESS OTHERWISE SPECIFIED DEC ANGLES | | APPROVALS | DATE |  ASINTECH SUNNYVALE, CA 94086 |
| .XX (0.X) & .20 (5.1) | | DESIGN | CABLE CO/DB 12-9-88 | |
| .XXX (0.XXX) & .000 (0.13) | | ENGINEER | | |
| BRACKETED DIMENSIONS ARE IN MILLIMETERS | | APPROVED | 12-31-88 | |
| MATERIAL | | R. GILLANDERS | | |
| N/A | | CBL ASSY, DB25 MALE TO 3 MALE DB9'S | | |
| FRESH | N/A | SIZE | DRAWING NO. | REV. |
| | | B | A730124 | B |
| DRAWN BY | | DATE | SCALE | SHEET 1 OF |
| P. McCANN | | 4-18-97 | 1=1 | DO NOT SCALE DRAWING |