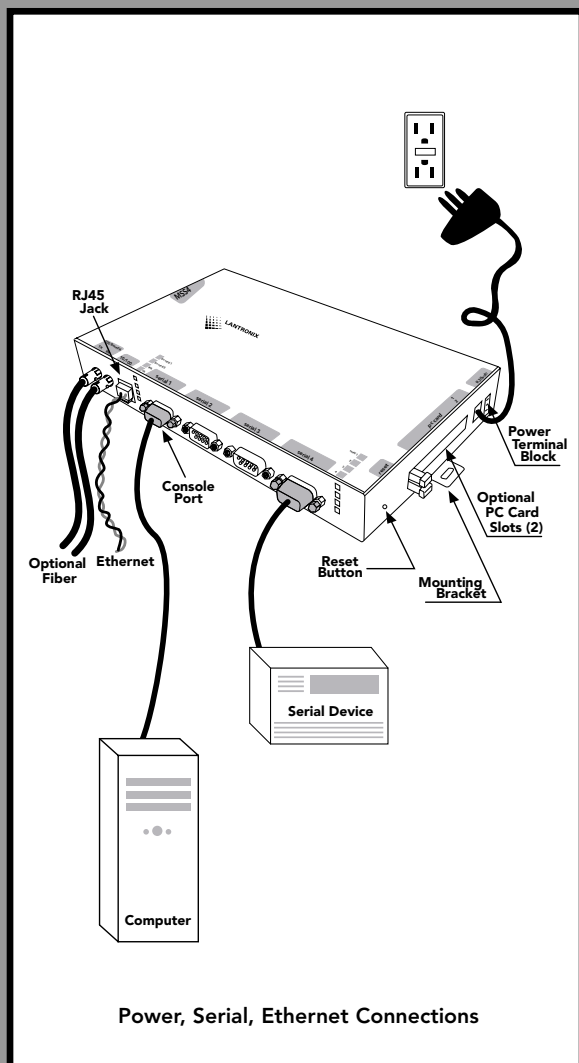


MSS4

Quick Start



The MSS4 network-enables Industrial Automation, Medical Instruments, modems, and other serial devices. Each of its four ports can accommodate RS232, RS422, or RS485 communication.

The MSS4 delivers remote management and data accessibility through its 10/100BASE-T Ethernet port or its optional 100BASE-FX fiber link port. Its two optional PC card slots provide flash storage or wireless Ethernet.

This Quick Start explains how to connect, configure, and troubleshoot your unit. For more detailed information, refer to the MSS Installation Guide and Reference Manual on the CD ROM supplied with this product.

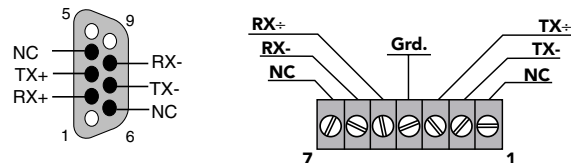
Connections

- 1) Place the MSS4 near your serial devices
- 2) Connect your Ethernet cable to the unit's RJ45 Ethernet port.
- 3) Optionally, connect your full duplex fiber optic Ethernet cables to the unit's ST connectors.

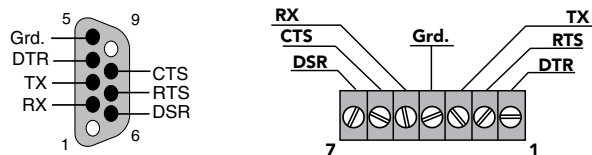
Note: If you wish to use the optional Power Terminal Block, refer to the Installation Guide.

- 4) Connect power (9 to 30 VDC, 3W maximum).
- 5) Wait about 30 seconds.
- 6) Confirm that the **Link** LED lights up.
- 7) Confirm that the **OK** LED is slowly blinking.
- 8) Note the pin assignments of the terminal blocks and DB9 connectors:

RS-485



RS-232



Assign IP

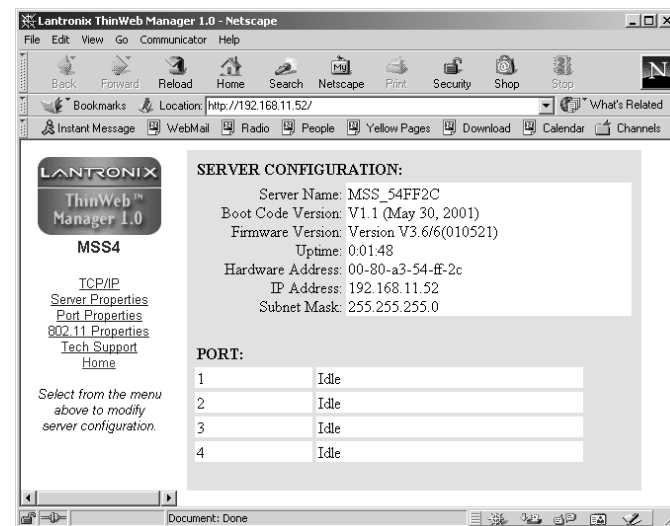
Caution: The IP address you assign must be within a valid range, be unique to your network, and be in the same subnet as your PC.

Note: For the convenience of assigning an IP address over your Ethernet network, refer to the "Using ARP and Ping" section of the Installation Guide.

- 1) Connect a null modem cable between your computer and the unit's console port (#1).
- 2) Open a terminal emulator (e.g., Hyperterminal).
- 3) Confirm that the configuration parameters are set as follows: **9600 Baud, 8/N/1, Xon/Xoff flow control.**
- 4) Press the Enter key.
- 5) Enter any user name.
- 6) At the local prompt enter: **set privileged**
- 7) Enter **system** for the password.
- 8) At the local prompt enter:
change server ipadd [xxx.x.x.xx.]

Configure

- 1) Open a Web browser.
- 2) Enter the **IP address** you just assigned into the URL address field.
- 3) Confirm that the following screen displays:
- 4) Click on the **Port Properties** heading.



- 5) Enter **System**.
- 6) Click on the **Login** button.
- 7) Confirm that the following screen displays:

SERIAL PORT SETTINGS:

Port: 1
Status: Local Mode

Speed: 9600
Char: 8
Stop: 1
Parity: none
Access: dynamic
Flow: xonxoff

☐ Incoming Password Req
☐ Signal Check

☐ Inactivity Logout
☐ DTR Wait

☐ DSR Logout
☐ Modem Control

☐ Password
☐ Modem Emulation

☐ Passflow

Port Name: Port_1

CONNECTION:

Local Switch: None

Forward Switch: None

Backward Switch: None

Break Control: local

Autostart with No Characters:
☐

Autostart with Characters:

Save: none

Datsend Characters:

Save: none

Datsend Timer: None
Idle:
Frame:

Terminal Type: None

Dedicated Host/IP Address:

RS485 SETTINGS:

enable RS485:
☐

Termination:
☐

Mode: 4wire
settable only if TX Drive is Auto

TX Drive: always

COUNTERS:

Seconds Since Zeroed: 433013
Local Accesses: 0
Remote Accesses: 0
Sessions: 0
Session Limit: 4
Bytes Input: 60
Input Flow Control: No
DSR: Yes
CTS: Yes
CD: Yes

Framing Errors: 0
Parity Errors: 0
Overrun Errors: 0
Current Session: None
Flow Ctd Violations: 0
Bytes Output: 2721
Output Flow Control: No
DTR: Yes
RTS: Yes

Update Port Settings

- 8) Select a port.
- 9) Confirm that your serial device(s) on that port match the serial parameters listed on the screen.
- 10) Repeat the last two steps for the other ports.
- 11) Click the **Update Port Settings** button.
- 12) Power cycle the unit to reboot.

PC Card Slot Options

The two optional PC card slots accept Type I/II PC cards. The bottom slot also accepts Type III cards. Neither supports hot-swapping; rather, you must reboot the unit any time you insert a PC card. Refer to our web site to determine the most current PC card technologies we support: <http://www.lantronix.com/products/ds/mssvia/cards>

Note: 802.11 wireless networking is enabled by default. To customize its settings, refer to the *Installation Guide on your CD*.

- 1) Disconnect power.
- 2) Insert your PC card into a PCMICA slot.
- 3) Connect power to the unit.
- 4) Wait about 30 seconds.
- 5) Confirm that the slot's green LED is lit.

Install

- 1) Disconnect power.
- 2) Disconnect your computer from the unit.
- 3) Optionally, mount the unit.
- 4) Connect your serial devices to the unit.
- 5) Connect power to the unit.

Troubleshoot

All MSS4 Models contain eight LEDs. The two LEDs labeled PC Card 1 and PC Card 2 are operative only on PC card-equipped models. For all MSS4 models, refer to the following table:

LED	Color	Meaning
Serial 1	green	serial traffic when blinking
Serial 2	green	serial traffic when blinking
Serial 3	green	serial traffic when blinking
Serial 4	green	serial traffic when blinking
OK	yellow green	network activity normal runtime code
Link	none green yellow	no Ethernet connection 10BASE-T connection 100BASE-T or -FX connection

For PC card-equipped models, refer to the following table:

PCC LED	PC Card
not lit	not in slot
green green, blinking	ready negotiating 802.11 settings or memory card not formatted
red red, blinking	failure not supported; can't be read
yellow yellow, blinking	initializing in progress scanning for 802.11 access point or initialization problem

Contact

Questions? Call Lantronix Technical Support at 800-422-7044 or 949-453-3990.

15353 Barranca Parkway
Irvine, CA 92618, USA
Phone: (949) 453-3990
Fax: (949) 453-3995

www.lantronix.com